



433 Council Drive, Fort Wayne, Indiana 46825

Complete Motor Manufacturing Facility Closing:

GENERAL ELECTRIC COMPANY

Sale Location: 2150 N. W. Broad Street
Murfreesboro, TN 37129

Wednesday, February 28th • 9:00 AM

Public Inspection: Tuesday, February 27th - 9:00 AM-5:00 PM

FEBRUARY

S	M	T	W	T	F	S
				1	2	3
4	5	6	7	8	9	10
11	12	13	14	15	16	17
18	19	20	21	22	23	24
25	26	27	28			

First Class Mail
U.S. POSTAGE
PAID
Fort Wayne, IN
Permit No.
650

AUCTION



LIVE INTERNET
BIDDING AUCTION
Visit BidSpotter.com

Complete Motor Manufacturing Facility Closing:

GENERAL ELECTRIC COMPANY

Sale Location: 2150 N.W. Broad Street, Murfreesboro, TN 37129

WEDNESDAY, FEBRUARY 28TH • 9:00 A.M.



1 OF 3 COMPLETE AUTOMATION
ENGINEERING MOTOR ASSEMBLY LINES



COMPLETE ROTOR CORE
CAST SYSTEM

VIEW OUR
INTERACTIVE CATALOG AT
www.charlestonauctions.com



COMPLETE STAMCO SLITTING LINE



JONES & SHIPMAN O.D. GRINDER



STAR CNC LATHE W/ STOCK FEEDER

AUCTION

Complete Motor Manufacturing
Facility Closing:

GENERAL ELECTRIC COMPANY



200,000+ LBS VARIOUS DIES (SALVAGE ONLY)



VARIOUS 24 & 36 VOLT BATTERY CHARGERS



VARIOUS MILLER TIG WELDING MACHINES



VARIOUS PALLET RACKING



TN LIC #00005245



433 Council Drive, Fort Wayne, IN 46825

1-260-373-0850 • Toll Free 1-877-301-9344 • Fax 1-260-373-0854

Email us at info@charlstonauctions.com or visit our website at www.charlestonauctions.com



LIVE INTERNET
BIDDING AUCTION

Visit BidSpotter.com
to register and view the
terms of the auction.



BLACK DIAMOND DRILL SHARPENER



HAMMOND PEDESTAL BUFFER



JONES-SHIPMAN O.D. GRINDER



(1 OF 3) CASTMASTER 400 TON DIECASTERS



LG. QTY. LOCKERS



(1 OF 2) ICE STATIONS



BRIDGE PORT VERTICAL MILLING MACHINE



DOALL 36" VERTICAL BAND SAW



IRONWORKER



STAR CNC LATHE W/ BARLOADER



VARIOUS MACHINE TOOLING



VARIOUS SURFACE & O.D. GRINDERS



LG QTY OF VARIOUS MOTORS



LG QTY OF CAFE & OFFICE CHAIRS



DISPLAY CASES & STANDS

MOTOR ASSEMBLY & WINDING EQUIPMENT:

- (Complete) TEKNO Rotor Core Casting System
- Support Equipment Including: 100 Ton Vertical Die Caster, Vertical Rotoshock Oven, Electric Furnace, Automated Ladel System, Pick-N-Place Transfer Robot, All Transfer Conveyor, 10" Capacity, CNC Controls
- (3) Complete Automation Engineering Motor Assembly Lines Consisting of: Station 1 - Bearing Press, Station 2 - Rotor Press, Station 3 - Motor Assembly Station w/Pick & Place Robot, Station 4 - Pre-load, Station 5 - Key Stock, Station 6 - Key Verification, Station 7 - Key Fold & Crimp, Production Capacity: Max. 1,200 Motors Per 8hr Shift
- (3) Automation Engineering No Load Test Stations - Station 1 Checks: Hypot Volts, Start Leakage, Main Leakage, Start Resistance, Main Resistance, Vibration - Station 2 Checks: Hypot Volts, Hypot Leakage, Rotation
- (3) Motor Label Stations
- (3) Pully Press Stations
- (3) AMT Stator Insulator Verification Check Stations, 36 Slot/4 Pole, Checks Core Compression
- Automation Engineering Surge Tester - Tests: Hypot, Resistance, Ground, Surge
- I.D.F. Stator Transfer Station w/Video Jet High Speed Ink Marking Station
- G.E. MCW Winding Machine Rebuilt by A.M.T., 2-Speed, 4-Pole Main
- A.M.T. In-Between Coil Expansion Press
- G.E. IMCW Winding Machine, 2, 4, 6 or 8 Pole, Single or 2-Speed Capable
- AMT IMCW Winding Machine, 2, 4, 6 or 8 Pole, 2-Speed
- AMT Stator Insulator Station w/Pick & Place Robot
- AMT Form-T Blocker Station, Single Station

WIRE WINDING & SUPPORT EQUIPMENT:

- Lg. Qty. of Various Amp Terminal Machines
- Various REMMELE Rotor Lathes w/Support Equipment, S/N 75-4639, 77-9421
- AMT Single Speed Blocker, 3-Phase, Shadow V Light Curtain
- AMT IMCW, 2-Speed Winder
- AMT Single Speed Insulator
- AMT Single Speed IMCW
- AMT Single Speed AMCW, 4 Pole Man
- (5) Single Speed Insulators, Model 45290A
- (2) 2-Speed Insulators

MILLING & DRILLING:

- BRIDGEPORT Vertical Milling Machine, 1 1/2 Hp, Power Feed, DRC 500 DRO, 9" x 24" T-Slot Table, Lube System, S/N 144990
- KEARNEY & TRECKER No. 2 Horizontal Milling Machine, Twin Spindle, 5 Hp, 12" x 50" T-Slot Table
- BRIDGEPORT Vertical Milling Machine, 1 1/2 HP, Power Feed, DRC 500 DRO, 9" x 42" T-Slot Table, S/N 13x961
- BRIDGEPORT Vertical Milling Machine, 'Series I', 2 HP, 9" x 42" T-Slot Table, Power Feed, GPI Pointfinder DRO, S/N 195991

SALE LOCATION: 2150 N. W. Broad Street, Murfreesboro, TN 37129 **DATE & TIME:** The Auction will begin promptly at 9:00 A.M. Local Time on Wednesday, February 28th. The doors will open at 8:00 A.M. auction day for final inspection and bidder registration. **PREVIEW INSPECTION:** The items will be available for advance inspection from 9:00 a.m. - 5:00 p.m. Local Time on Tuesday, February 27th. **TERMS OF SALE:** A 12% Buyer's Premium will be charged on all purchases if paid by Cash Or Check. 15% if paid by MasterCard or VISA. All bidders must register and provide proper identification. All items are sold "as is, where is" and must be paid for IN FULL on sale day in CASH, CHECK OR MASTERCARD OR VISA, accompanied by A LETTER FROM THE PAYOR'S BANK GUARANTEEING UNQUALIFIED PAYMENT TO CHARLESTON AUCTIONS for this sale. **REMOVAL:** All rigging and moving companies must be pre-approved and show proof of insurance. No items will be removed without proof of payment. Removal times will be at the conclusion for 2 hours, time to be determined & March 1st - 3rd, 9:00 a.m. - 5:00 p.m. and March 5th - 9th, 9:00 a.m. - 5:00 p.m. If additional time is needed, please contact a Charleston Auctions representative. Lots not paid for and/or removed within the time allowed may be resold at public or private sale without further notice, and any deficiency, together with all expenses and charge of resale, will be charged to the defaulting purchaser. Your stamped paid receipt must be shown to checkout supervision prior to removal. Although checkout supervision will be provided, the auction company and sellers are not liable for lost or stolen items purchased at the sale. **NOTE:** whole all information contained in this brochure and other advertising has been obtained from sources deemed reliable, neither the auction company, seller nor publisher shall be liable for any errors or for the correctness of descriptions. All purchases are made "as is, where is" based entirely on the personal inspection and/or opinion of the purchaser and without warranty or guarantee of any kind. Statements made sale day take precedence over printed matter. **Charleston Auctions Reserves the Right to reschedule the auction due to inclement weather / SOME ITEMS SUBJECT TO PRE-SALE**

VISIT OUR WEBSITE AT
www.charlestonauctions.com
FOR A COMPLETE LOT LISTING
WITH PICTURES!



LIVE INTERNET BIDDING AUCTION



DRIVING DIRECTIONS

Take I-65 to Nashville, Merge onto I-24 (Exit 86) to Chattanooga/Knoxville/I-40E, Merge onto TN-840 East via Exit 74B Toward LeBanon/Knoxville, Take US-41/US-70 South (Exit 55) Toward Smyrna/Murfreesboro

FOLLOW AUCTION SIGNS!!!

HOTEL AND AIRPORT INFORMATION

BEST WESTERN
168 Chaffin Place, Murfreesboro, TN - (615) 895-3818

COMFORT INN
110 N. Thompson Ln., Murfreesboro, TN - (615) 890-2811

Murfreesboro City Airport
1930 Memorial Blvd., Murfreesboro, TN - (615) 848-3254

Nashville International Airport
1 Terminal Dr # 501, Nashville, 37214 - (615) 275-1600



HYPOT & SLAUGHTER TEST UNITS



ROCKWELL HARDNESS TESTER



(1 OF 2) CMM SYSTEMS



FEDERAL PNEUMO-CENTRIC MARK II TEST UNIT



VARIOUS FLUKE & SLAUGHTER TESTERS



BROWN & SHARPE SCREW MACHINE



MATTISON 24" X 48" SURFACE GRINDER



BROWN & SHARPE 618 MICROMASTER SURFACE GRINDER



(1 OF 3) CASTMASTER DIECASTERS, 400 TON



RIDGID POWER THREADER



VARIOUS DIE HANDLING TRUCKS



ADVANCE FLOOR SCRUBBER



CLARKE ELECTRIC SCRUBBER



COFFING 2 TON ELECTRIC CHAIN HOIST



NIAGARA 6' POWER SHEAR



NIAGARA POWER ROLLS



SULLAIR 400 HP AIR COMPRESSOR

GRINDING & BUFFING:

MATTISON Surface Grinder, Electromagnetic Chuck, Wet Type, S/N V-1091-0S
 (3) BROWN & SHARPE Micromaster 618, 6" x 18" Mag Chuck Electromagnetic, Hydraulic, S/N 523-6182-6630, 523-8182-6709, N/A
 JONES & SHIPMAN O.D. Grinder, Model 1305, 10" Capacity, S/N BO-15144
 BROWN & SHARPE 618 Micromaster Hydraulic Surface Grinder, 6" x 18" Electromagnetic Chuck, S/N 523-6181-4630
 12" Disc Sander, Tilting Table, 1 HP
 BROWN & SHARPE Micromaster Hydraulic Surface Grinder, 8" x 18" EMC, S/N 523-8188-7693
 STERLING Tool Sharpener/Grinder, Model DB, S/N DC2392DB
 BLACK DIAMOND Precision Drill Grinder, Model 21, 1/3 HP, 1 Phase, 3,400 RPM, S/N 17255
 BROWN & SHARPE No. 13, O.D. Grinder, 10" Capacity, S/N 6276
 (2) KO LEE Tool Grinder, Model BA960, S/N 18845KA & 6782
 THOMPSON Hydraulic Surface Grinder, 25" x 12" EMC, w/ Neutralizer II Controller, 7.5 Hp, 3 Phase
 ROCKWELL Universal 6" Belt Sander, Model 31-501, S/N DG4142
 Huge Qty. Various Pedestal & Bench Grinders & Buffers
 HEALD No. 72-A "Size-Matic" High Speed I.D. Grinder, 16" Swing, 14,000 RPM Spindle
 HEALD Tool Shapening Machine, Model 3, S/N 1803

SAWS:

KALAMAZOO Abrasive Chop Saw, Single Phase, 12" Capacity
 DOALL Contour 36" Vertical Band Saw, Blade Welder, Model 36-2, 30" x 30" Tilt Table, 3 Phase, S/N 52-57432
 POWERMATIC Table Saw, Model 70M, 30" x 40" Table Size, S/N 753627
 DELTA Radial Arm Saw, S/N BS8807
 RACINE Power Hack Saw, 3-Phase

QUALITY CONTROL:

(2) DMM 624 Coordinate Measuring Machines
 (2) HYPOT/SLAUGHTER Test Units
 Lg. Qty. Of Various Mics, Calipers, Height Gages, Testers, Go/No Go Gages, Centers, Indicators, Etc. – FAR TOO MUCH TO LIST! – CALL FOR DETAILS!

OFFICE:

Lg. Qty. of Various Office Equipment & Furnishings, Conference Tables & Chairs, Dbl. Pedestal Desks, Chairs, Potted Plants, Office Partitions, Overhead Projectors, Computers, Monitors

ANY MEDIA ACTIVITY NEEDS TO BE APPROVED BY BOTH GENERAL ELECTRIC AND CHARLESTON AUCTIONS.

BRIDGEPORT Vertical Series II Special Milling Machine, 2 HP, 11" x 58" T-Slot Table, Power Feed, FAGOR DRO, S/N 19325
 (2) BUFFALO Drill Presses, Variable Speed, 22" x 23" Table, Foot Pedal Controls, S/N's 57-6359 & 57-8280
 KEARNEY TRECKER Vertical Milling Machine No. 2, 5 HP, 12" x 50" T-Slot Table, S/N 3-8427
 KEARNEY TRECKER Universal Milling Machine, 12" x 50" T-Slot Table, S/N 10-8269
 MILWAUKEE Mag Buss Drill, Heavy Duty, Single Phase
 PRATT & WHITNEY Jig Bore No. 2A, Model 620, 22" x 44" T-Slot Table, 20" Rotary Table, S/N 669
 BRIDGEPORT Vertical Milling Machine, 1 HP, 9" x 42" T-Slot Table, S/N 1400478
 SNOW Drilling & Tapping Press, Model 25DR-1-A, S/N 37077-12
 EDLUND Drill Press, Model 2F8, S/N 673

MISCELLANEOUS:

Lg. Qty. Various Tonnage Arbor Presses Parts Washer, Workbenches, Table Vises, Hardware Cabinets
 K & H Huppert Electric Furnace, Model ST, Volts 440 SPH, AM - 9KW, Style 12AFMPC, 8" x 8" x 18" Capacity, S/N 460
 GE Electric Furnace
 KANE & ROACH Rotary Straightner, Model 8198, S/N 2075
 (4) CAST MASTER Die Cast Machines, 300-1000 Ton, Various Tonnages & Capacities
 OHIO Broach Machine, Model RP 324, S/N 57590-88
 Oil Groover Machine & Slot Broach, 440 Volt, 3 Phase, S/N 1186
 (4) SPIROL Pneumatic Roll Pin Insert Presses w/Vibratory Bowl Feeders, Feed Rate 0-100, Manual or Automatic
 (2) PEMSERTER Series 1000 Tru-Motion Presses, 8 Ton, S/N 1000-1993E218RI & S/N 1000-1994ER 13 RI
 Parts Crib Inventory Consisting of, Die Repair Parts, Spare Parts Inventory Bulbs, Bushings, Relays, Solenoids, Copper Tubing, Fuses & Gages, Hydraulic Fittings, Circuit Breakers, Gate & Globe Valves, Regulators, Wax, Compounds & Lubricants

MATERIAL HANDLING:

Huge Qty. of Various Bridge & Jib Cranes
 Lg. Qty. of Banding Carts & Extra Strapping (Steel/Plastic)
 Lg. Qty. of Roller, Skate & Power Conveyor, Various Widths & Lengths
 (2) ABEL & HOWE, 3-Ton Jib Cranes, w/P & H 3-Ton Cable Hoists, 12' Tall x 10' Arm
 Over 1 Mile of Overhead Chain Conveyor
 YALE Electric Die Truck, Model MPW060LON24T2748, 6,000 Lb. Capacity, 24 Volt, S/N A838NO5495S
 (3) GNB Battery Chargers, 36 Volt
 (9) Various 24-48 Volt Chargers
 MAC 24 Volt Battery Charger
 GORBEL Self Supporting Gantry System, 16' x 16' x 12', 1,000 Lb. Capacity, w/1/2 Ton YALE Electric Chain Hoist



(1 OF 3) AMT STATOR INSULATOR VERIFICATION STATIONS



(1 OF 3) FERGUSON PICK AND PLACE ROBOTS



(1 OF 3) PULLY PRESSES



MILWAULKEE MAG BUSS DRILL



(1 OF 3) AUTOMATION ENGINEERING NO LOAD TEST STATIONS



LG. QTY. OF DIES (SALVAGE ONLY) & RACKS



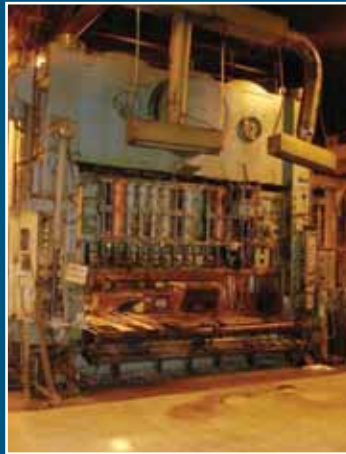
A & M 5 TON BRIDGE CRANE



HUGE QTY. OF HAND & AIR TOOLS



(1 OF 4) DENNISON MULTIPRESSES



DANLEY 400 TON PRESS



MINSTER 50 TON OBI PRESS



MINSTER 60 TON OBI PRESS

PLANT SERVICING EQUIPMENT:

Lg. Qty. Material Carts, Tubs, Wire Baskets, Dump Hoppers, Cabinets, Shelving, Pallet Racking, Shop Stools, Safety Ladders, Floor Fans
 Over 1,000 LYONS Lockers, Each Locker is 34" x T x 10" D x 11" W
 Various Electric, Die & Tote Lifting Carts
 SPEEDAIRE 5 Hp Vertical Air Compressor, Model 3JR77, 2-Stage
 GENIE Man Lift, Model IWP-24, 24' Platform Ht., 350 Max Wt., S/N 4094-2083
 SULLAIR Rotary Screw Air Compressor, Model 32-25-300I WCAC, Rated Max Pressure 100-100 PSIG, 1489 Hrs., 300 HP, S/N 003-78477
 PIONEER Refrigerant Air Dryer, Model 1800A, 200 Max. Pressure, 3-Phase, S/N C921064K
 CLARKE "ENCORE" Walk Behind Floor Scrubber, Electric
 SAMSCO Water Evaporator, 700 Series, Water/Oil Separator, 3-Phase
 HYDROFLOW Coolant Filter, Model HVF26B
 RIDGID Power Bolt & Pipe Threader, w/RIDGID Power Lock, Model 1822, Single Phase, S/N 103609
 ADVANCE HYDRO Retriever Floor Scrubber, Model 5010, 36 Volt, S/N 477588
 ZEKS Hydronix Desiccant Dryer, Model 2300HP510N, 2300 SCFM, 100 PSIG, 100 Degrees, S/N 108747
 TORIT Dust Collector, Model 50, 1/2 HP, 600 RPM, 3-Phase, S/N I03555
 ADS Automatic Inventory Control System, Model 3096, S/N 78799596327
 MAX-PAX Vertical Cardboard Baler, Model MP80, S/N 04909-11

PRESSES & SLITTING RELATED:

STAMCO/PRECISION STRIP Slitting Line, S/N PS1071
Line Data: Material - CR Steel, Maximum Weight of Coil - 25,000 lb, Thickness: Max - 0.060, Min - 0.028, Sheet Width: Max - 48", Line Speed: Max - 1000 FPM, Min - 200 FPM
Uncoiler Data: Mandrel Diameter: Max - 24", Min - 20", Full Reel Diameter: Max - 55"
Slitter Data: Gear Box Ratio: 4.6:1, Load & Gear Box WK² - 8 lb - ft²
Recoiler Data: Mandrel Diameter: Max - 20", Min - 20", Full Reel Diameter: Max - 55"
Loop Data: Maximum Storage - 25' Aprox., Type of Position Feedback: Manual
 MINSTER OBI Gap Press No. 6, Air Clutch, BOLSTER Size LR-FB 32 x 21, 45 SPM, 60 Ton, 5" Stroke, 2.75 Adj. Slide, S/N SS-6-23418
 MINSTER No. 5 OBI Gap Press, 3" Stroke, 2 3/4 Slide Adj., 45 Ton, S/N 5-11314
 DANLEY Press, Model S2-400-144-48, 600 Ton, 10" Stroke, 22-42 SPM, Single Stroking, 32-60 SPP Continuous, S/N 66426001
 LITTEL Straightner, Model 4125PDE, Capacity .125" Thick x 12" Wide, S/N 75896-67
 LITTEL Auto Centering Reel, Model 49-12, 4,000 Lb., S/N 7589767
 MINSTER Auto Centering Reel, Model 4-14D, Max Coil Weight 4,000, Max O.D. 60", I.D. Range 16-20, S/N 1370065
 MINSTER Stock Straightner, Model MHS-10-14-4D, Assembled Weight 10,000 Lbs., Line Speed 2400 IPM, Max Stock Width 13.5", Max Stock Thickness .060", S/N 13-11151

MINSTER Press, Model PM3-300-72, 300 Ton, BOLSTER, FB 1829.60 x 812.80, SPM 0-500, Stroke in MM 31.75 Adj. 76.20, S/N PM3-300-27289
 (5) Various DENNISON Multi-Presses, 1-8 Ton Capacity

SALVAGE:

(Over 75) Scrap Dies (Approximately 200,000 lbs)
 Huge Qty. of Motors, Electrical, Wire, Steel, Plastic, Etc.

LATHES:

MONARCH Engine Lathe, Catalog Size 16", Actual Swing 18.5", DBC 54", 1 3/4" Spindle Hole, S/N 43027
 LEBLOND Engine Lathe, 2" Spindle Hole, FAGOR DRO, 17" Swing, 53" DBC, S/N 6HC466
 BARBER COLMAN HENDEY Speed Lathe, 9" Swing, S/N AHL 40069
 LEBLONDE Dual Drive Lathe, 16" Swing, Jacobs Speed Chuck, S/N HCl1666
 1992 STAR CNC Automatic Lathe, Model JNC-25, Fanuc Series O-T Controller, S/N 050405, w/Mini Turbo Bar Loader, S/N 12-900268

METAL FABRICATION EQUIPMENT:

BUFFALO Drill Press w/Electro Arc, Metal Disintegrator Head
 (3) MILLER 60M Series 24 Volt Wire Feeders
 Lg. Qty. of Machine Tooling (i.e. Machine Vises, Rotary Tables, Collets, Set-up Sets & Tie Downs, Rotary Cross-Slide Tables, Chucks, Wrenches, Tool Posts & Holders, Table Vises, Speed Chucks, Tapping Heads, ect.)
 LASSY Hand Tapper w/Tooling
 Lg. Qty. of Perishable Tooling (i.e. Carbide Inserts, End Mills & Dbl. End Mills, Cutters, Drills, Reamers, Broach & Key Way Cutters, Taps, Dies, Stamps, ect.)
 DAKE 50 Ton H-Frame Shop Press
 NIAGARA No. 66 Shear, 3/16" - 1/8" Mild Steel Capacity, 6' Manual Back Gage, S/N 55461
 BROWN & SHARPE No. 2 Automatic Screw Machine, 3/4" Capacity, 4 Speed, S/N 542-2-7436-3/4, w/ Auto Bar Feed, Model 37, S/N 10120
 MUBEA Universal Ironworker, Size KBL 1/2, Copper-Notcher - 7/16" Th x 3" D x 2" W, Bar Shear - Bar Round 1 5/8", Square 1 1/2", Angle 3 x 3/8, Flat 2 3/8 x 3/4, Plate 1/2 - 5 1/2 x 5/16, Section Shear 1/2", Punch 1" - 5/8" or 3/4" - 3/4", S/N 133/12/98/16
 CHICAGO 3' Finger Brake, Model L, S/N 10388
 NIAGARA 3' Manual Slip Rolls, Model 349P, 10-11 Ga. Capacity, S/N 59521
 (2) MILLER Tig-Rig Welders, Model Tig-Rig, 3 Phase, 230/460 Volts, 19.8 KW, 76/38 Amps, w/MILLER Watermate 1 A Cooling System, S/N JH274376 & JH274375
 (9) MILLER Maxtron 450 Arc Welders CC/CV Dc Inverters, (ALL) Have MILLER 60m Series 24 Volt Wire Feeders, S/N's KG252974, KG295438, KG295437, KG295440, KG295445, KG295453, KG295447, KG2955448, KG252971



LG. QTY. OF ROLL AROUND WIRE BASKETS



VARIOUS PARTS WASHING SYSTEMS



VARIOUS ARTOS WIRE MACHINES



VARIOUS TOOL CUTTER GRINDERS