



433 Council Drive, Fort Wayne, Indiana 46825

By The Order Of The U.S. Bankruptcy Court #06-11066 :
We have been commissioned to liquidate the assets of:

MIDWEST METALLURGICAL LABORATORY

Sale Location: 15290 15 Mile Road, Marshall, MI 49068

THURSDAY, Nov. 2nd • 10:00 AM (Local Time)

Public Inspection: Wednesday, November 1st - 9:00 AM-5:00 PM

NOVEMBER						
S	M	T	W	T	F	S
			1	2	3	4
5	6	7	8	9	10	11
12	13	14	15	16	17	18
19	20	21	22	23	24	25
26	27	28	29	30		



FIRST CLASS
U.S. POSTAGE
PAID
Fort Wayne, IN
Permit No.
650

**REAL ESTATE
TO BE SOLD @
12:00 NOON**

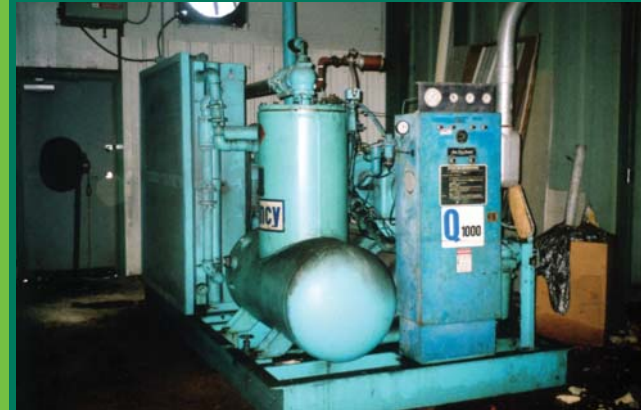
AUCTION

By The Order Of The U.S. Bankruptcy Court # 06-11066:
We have been commissioned to liquidate the assets of:

MIDWEST METALLURGICAL LABORATORY

Sale Location: 15290 15 Mile Road, Marshall, MI 49068

THURSDAY, NOVEMBER 2ND • 10:00 A.M. (Local Time)



(1) OF (2) QUINCY Q1000 200 HP ROTARY SCREW AIR COMPRESSORS



HUNTER HMP-10 AUTOMATIC MOLDING MACHINE

AUCTION



CATERPILLAR 6,000 LB. FORK LIFT



PADDLE TYPE MIXER, 3 CU. FT.



(1) OF (3) STORAGE TRAILERS

LIVE INTERNET BIDDING AUCTION

Visit BidSpotter.com to register and view the terms of the auction.



WHEELABRATOR 30,000 FM PULSE-JET DUST COLLECTOR



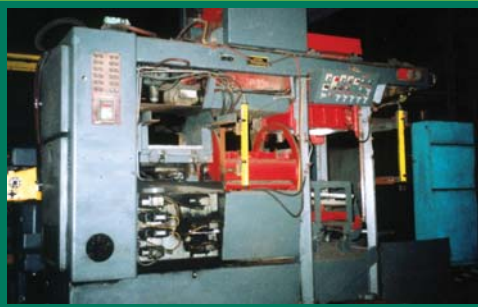
FMC 7 1/2 TON MOBILE CRANE

Preview Inspection: Wednesday, November 1st • 9 A.M. - 5 P.M. Local Time

SALE LOCATION: 15290 15 Mile Road, Marshall, MI 49068 **DATE & TIME:** The Auction will begin promptly at 10:00 A.M. Local Time on Thursday, November 2nd, 2006. The doors will open at 8:00 A.M. auction day for final inspection and bidder registration. **PREVIEW INSPECTION:** The items will be available for advance inspection from 9:00 a.m. - 5:00 p.m. Local Time on Wednesday, November 1st, 2006. **TERMS OF SALE:** A 10% Buyer's Premium will be charged on all purchases if paid by Cash Or Check. 13% if paid by MasterCard or VISA. All bidders must register and provide proper identification. All items are sold "as is, where is" and must be paid for IN FULL on sale day in CASH, CHECK OR MASTERCARD OR VISA, accompanied by A LETTER FROM THE PAYOR'S BANK GUARANTEEING QUALIFIED PAYMENT TO CHARLESTON AUCTIONS for this sale. **REMOVAL:** All rigging and moving companies must show proof of insurance. No items will be removed without proof of payment. Removal times will be at the conclusion of the sale until 5:00 P.M. & on Friday November 3 & Monday, Monday 6th from 9:00 A.M. - 5:00 P.M. Local Time. If additional time is needed, please contact the auction company to schedule an appointment. Lots not paid for and/or removed within the time allowed may be resold at public or private sale without further notice, and any deficiency, together with all expenses and charge of resale, will be charged to the defaulting purchaser. Your stamped paid receipt must be shown to checkout supervision prior to removal. Although checkout supervision will be provided, the auction company and sellers are not liable for lost or stolen items purchased at the sale. **NOTE:** All information contained in this brochure and other advertising has been obtained from sources deemed reliable, neither the auction company, seller nor publisher shall be liable for any errors or for the correctness of descriptions. All purchases are made "as is, where is" based entirely on the personal inspection and/or opinion of the purchaser and without warranty or guarantee of any kind. Statements made sale day take precedence over printed matter.



433 Council Drive, Fort Wayne, IN 46825
1-260-373-0850 • Toll Free 1-877-301-9344 • Fax 1-260-373-0854
Email us at info@charlstonauctions.com or visit our website at www.charlstonauctions.com



HUNTER HMP20 AUTOMATIC MOLDER



DROP BOTTOM TUBS



(2) BMM CT-3 MOLDING MACHINES



WHEELABRATOR 34 CU. FT. 'SUPER I' W/LOADER



100 TON SILO W/BIN VENT



FOX SINGLE END 30" 12,500 SFPM W/SNIP TRAP



BEARDSLEY & PIPER 85-B SPEED MULLER, 150 HP MOTOR

FOUNDRY EQUIPMENT:

(2) BMM CT-3 Molding Machines, Model V2230, Type: Jolt Squeeze, Pinlift, Semi-Automatic, S/N's DH4423 & DH1704
HUNTER HMP-10 Automatic Molding Machine, Model HMP-10, Green Sand, Mold Size 14' x 19", w/Light Curtain, S/N H617

FOX Single End Grinder, 30" x 12" x 2", 12,500 SFPM, w/Snip Trap, 20 HP

(3) 100 Ton Silos, Size: 12' Dia. X 35' High w/Bin Vents, Cone Bottoms

Silo, 85 Ton Capacity, w/Bin Vent Dust Collector, Size: 12' x 35', Cone Bottom

BEARDSLEY & PIPER Speed Mixer, Model 85-B, 150 Hp Motor, 3,000 Lb. Capacity, Complete w/Batch

Hopper & Blower for Cooling, Rated at 70 Ton Per Hour

BEARDSLEY & PIPER Mixer, Model 40-A, 400 - 600 Lb. Capacity, 20 HP

HUNTER HMP-10 Automatic Molding Machine, Model HMP-20, Green Sand, Mold Size 20" x 24",

w/PC Controls & Light Curtains, S/N A314

CARVER Mixer, Model 3CG (30"), Type: S, 600 Lb. Capacity

CARVER Mixer, Model 2CG (24"), 400 Lb. Capacity

CARVER No-Bake Mixer, Model GBF-5000, 500 Lb. Capacity, Articulated Head, S/N 220

MARLEY Cooling Tower, Complete w/Motor & Fans

Paddle Type Mixer, 3 CU. FT., Portable

Blowing Sand Hopper, 20 CU. FT. Capacity

HARTLEY Auto-Bond Feed System, Even-Flo Bin w/Timer & Dust Collector, Variable Speed

LAWSON Auto Grinder, Rear Axle & Carries, Prod. Up To 1,200 Pcs. Per Hour

Gas Fired Oven, 0 - 300 Degrees, Size of Opening: 48" x 60", Style: V41HD

(5) Casting Tub Unloading Stands

(2) CARVER/DEPENDABLE Sand Heaters, Model 3, 600 Lb. Per Min. Capacity, Type: Gas w/Controls, S/N 2258

CARVER/DEPENDABLE Mixer, Model 'Pace Master' 250 w/Final Blending Head

MACAWBER, Sand Transporter, Size: 4" w/Controls

MODERN Ladle, 500 Lb. Capacity, Manual Type, 20 x 20

MODERN Ladle, 1,500 Lb. Capacity, Gear Driven, 22 x 24

WHEELABRATOR Cleaning Machine, Type: Q Super I, 34 CU. FT. Capacity, w/Mag. Flights, Large Separator (60")

WHEELABRATOR 34 CU. FT. 'SUPER I' Skip Loader, Type: Cable Lift

GEORGE FISHER Gate Breaker, Model GF-4, w/Hydraulic Unit & Power Panel

SIMPLICITY Shakeout, Size: 6' x 8', 4 Bearing Unit/Barred Deck, Vibrating Deck

REX CARRIER OSC Pan Conveyor, Size: 30" x 24' L x 8" Deep

MISCELLANEOUS EQUIPMENT:

TREE Milling Machine, 1 HP, 10" x 48" Table Size

(2) STATE 24" Disc Sanders, 240/440 Volt, 3-Phase

Over (100) Drop Bottom Casting Tubs, 30" x 38" x 20" Deep w/Drop Bottoms

Complete Parts Room (I.E. Bearings, Belts, Hardware, Motors, Pumps, Electrical Components, Controls, Etc.)

DELTA Drill Press, 15", 3/8" Chuck

TABOR Cut-Off Saw, 20", Complete w/Motor Push Start Button

ADAMS Hydraulic Lift Station, 4' W x 3' L x 48" High

BRIDGEPORT Milling Machine, 1/2 HP, 42" Table Size

DRAKE Manual Type Press, 25 Ton Capacity

Miscellaneous Motors & Gear Boxes, 3-Phase, 220/440/360 Volt

MILLER Welder, AC/DC, 25 - 600 Amps w/Power Leads

CARMEN OSC Conveyor, Size: 30" x 12' Long

Over (500) 4' x 4' Pallet Dividers (Plywood)

Various Welders, Hoists, Jib & Gantry Cranes, Hydraulic Units, ENERPAC Type Fitting Press, Chop Saws, Grinders,

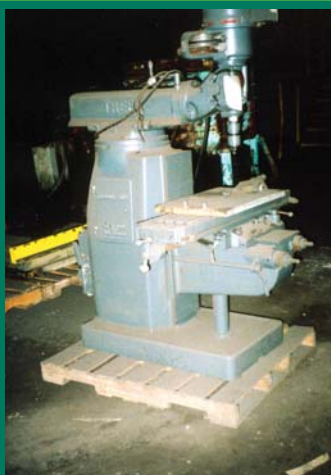
Drill Presses, Hand Carts, Pallet Jacks, Etc.

Various Workbenches & Tables, Stands, Carts, Forman Stands, Message Boards, HD Casting Racks, Pallet Racking,

Shelving, Scissor Tables, Etc.



STATE 24" DISC SANDER



TREE 1 HP MILLING MACHINE



CARVER GBF500 NO-BAKE SAND MIXER



COMPLETE PARTS ROOM



MARLEY COOLING TOWER

ROLLING STOCK: (1) OF (3) Storage Trailers, 40' Long

MATERIAL HANDLING EQUIPMENT:

CATERPILLAR 6,000 Lb. Fork Lift, 132" Lift Height, Solid Tires

FMC Mobile Crane, 7 1/2 Ton Capacity, 4 x 4 Drive, Diesel Powered

PLANT SERVICING EQUIPMENT:

(1) OF (2) QUINCY Q1000 Rotary Screw Air Compressors, Model

QSI1000, 200 HP, Oil/Air Cooled, 1,000 CFM, S/N 3278

TWIN CITY Crane, 2 Ton Capacity, 30' Span, Manual Operated

WHEELABRATOR Pulse Jet Bag Type Dust Collector, 30,000 CFM, Complete w/Motor/Fan

PANGBORN Dust Collector, 20,000 CFM, Shaker Bar Bag Type, w/Motor/Fan

SHEPARD NILES Crane, 7 1/2 Ton Capacity, Power Travel, 35' Lift Height, 30' Span

ROBIN MYERS Hoist, 5 Ton Capacity, Cable Type, Pendant Controls, Power

Travel Magnet, Size 36", Type: DC, w/Chains

COFFIN Electric Hoist, 1 Ton & 2 Ton Capacity, 220/440/360 Volts, w/Trolleys,

Cable Type

HANKISON Air Dryer, Model PR1600, S/N 0370-8-98081

Tram Rail, Approximately 400 Ft., w/Switches & Turns



DRIVING DIRECTIONS

Take I-69 to F Drive North
Go West to 15 Mile Road
Turn Right - Approximately 3 Miles
FOLLOW AUCTION SIGNS!

MAJOR INDUSTRIAL REAL ESTATE AUCTION

MidWest Metallurgical Laboratory
15290 15 Mile Road, Marshall, MI 49068
Thursday, November 2nd - 12:00 Noon

- Located at I-69 / I-94 Interchange
- Hard to find 60,000+ Sq. Ft. Facility
- 23.00+/- Acres
- Selling in 2 Separate Tracts
- \$12,000 Annually for Cellular Tower Lease

Property Description:

Type: Industrial
Construction: Steel/Block
No. Dock High/Low Doors: 2/1
No. Grade Level Doors: 4
Ceiling Height: 22 ft. at eaves
Acreage: 23.00 +/-
Building Area: 60,172 Sq. Ft.
Year Built: 1960
County: Calhoun
Annual Taxes: \$25,754.00

Real Estate Inspection is by appointment only. For more info. and terms and conditions visit www.charlestonauctions.com



AUCTIONEERS NOTE: Do not miss your opportunity to buy this rare industrial facility. Property will sell in two separate tracts. Track #1 - 60,000 Sq. Ft. Facility on 21+/- Acres with steel frame pole barn and 2-story home. Track #2 - 2+/- Acres with cellular tower (Nextel). Current lease generates an income of \$12,000.00 annually. Look forward to seeing you all at the sale!