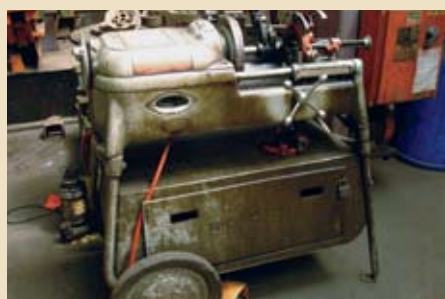




MARVEL 'SERIES 9' POWER HACK SAW



LEFT PIC: (1 of 2) BURNHAM GAS FIRED BOILERS
RIGHT PIC: HUGE QTY. OF VARIOUS TIG, MIG & ARC WELDERS



RIGID POWER THREADER



LEFT PIC: (3) 2006 AMP MACHINES
RIGHT PIC: KERNEY TRECKER 4" HORIZONTAL BORING MILL



LODGE & SHIPLEY 14" LATHE



LEFT PIC: MARVEL 'SERIES 8' VERTICAL BAND SAW
RIGHT PIC: MOORE JIG BORE



LEFT PIC: MOORE JIG GRINDER



RIGHT PIC: PULLMAXCIRCLE SHEAR



BID LIVE ONLINE AT BIDSPOTTER.COM

IMPORTANT INFORMATION

SALE LOCATION: 1543 South 54th Avenue, Cicero, IL 60804
DATE & TIME: The Auction will begin promptly at 9:00 AM (Local) on Thursday, November 6th.
Preview Inspection: The items will be available for advance inspection from 8:00 AM - 4:00 PM (Local) on Wednesday, November 5th.
TERMS OF SALE: A 12% Buyer's Premium will be charged on all purchases. A 15% Buyers' Premium will be charged if using MasterCard or Visa. Charleston Auctions is now accepting all major credit cards. For On-Line Auction Terms, please visit bidsponsor.com. All bidders must register and provide proper identification. All items are sold "as is, where is" and must be paid for IN FULL, in CASH OR CHECK, accompanied by A LETTER FROM THE PAYOR'S BANK GUARANTEEING UNQUALIFIED PAYMENT TO CHARLESTON AUCTIONS for this sale.

REMOVAL: All rigging and moving companies must be pre-approved prior to sale day. No items will be removed without proof of payment. Sale day removal from conclusion of sale until 6 PM. Removal times will be from 9:00 AM to 5:00 PM Local Time on November 7th & 8th, 10th - 15th & 17th - 21st. Lots not paid for and/or removed within the time allowed may be resold at public or private sale without further notice, and any deficiency, together with all expenses and charge of resale, will be charged to the defaulting purchaser. Your stamped paid receipt must be shown to checkout supervision prior to removal. Although checkout supervision will be provided, the auction company and sellers are not liable for lost or stolen items purchased at the sale.

DISCLAIMER AND ABSENCE OF WARRANTIES: Each potential Bidder is responsible to conduct, at their own risk and cost, their own independent inspections, investigations, inquiries, and due diligence concerning the property. Seller and Charleston, or Charleston's agents and associates, are not responsible for any warranty as to condition of property. Bidder shall be fully responsible for confirming that each item bid on is appropriate for Bidder's intended use. Neither Charleston nor Seller shall be responsible, in any way, for confirming or denying the specific identity or intended use of any item or piece of property. Inspection dates have been scheduled and will be staffed with auction personnel. Please feel free to inspect the property at any other time, so long as arranged in advance with Charleston. Bidder shall repair any damage to the Property done by Bidder, its representatives and agents, while conducting any inspections. In addition, Bidder shall indemnify, defend and hold Seller harmless for any claims or damages suffered by Seller relating to actions taken by Bidder, its representatives and agents, while conducting any inspections.

The property is being sold on AS IS, WHERE IS basis, and no warranty or representation, either express or implied, concerning the property is made by the Seller or the Auction Company. The information contained in this brochure is subject to verification by all parties relying on it. No liability for its accuracy, errors or omissions is assumed by the Sellers or the Auction Company.

GOVERNING LAW: Bidder agrees that no matter what State or Country Bidder resides, or location of the auction, all disputes or disagreements shall be construed according to the laws of the State of Indiana.
Charleston Auctions Reserves the right to reschedule due to inclement weather. Items Subject to Presale.



433 Council Drive, Fort Wayne, IN 46825

**Appliance Plant Closing:
FORMER ASSETS OF GENERAL ELECTRIC COMPANY**

Sale Location: 1543 South 54th Avenue, Cicero, IL 60804
(Cicero located approximately 9 miles SW of Chicago)

THURSDAY, NOVEMBER 6th - 9 a.m. Local Time
Preview Inspection: Wednesday, November 5th
8:00 p.m. - 4:00 p.m.

NOVEMBER

SUN	MON	TUE	WED	THU	FRI	SAT
						1
2	3	4	5	6	7	8
9	10	11	12	13	14	15
16	17	18	19	20	21	22
23	24	25	26	27	28	29
30						

WWW.CHARLESTONAUCTIONS.COM

AUCTION



**Sale Date: Thursday, November 6th
Beginning @ 9 AM Local Time**

**Appliance Plant Closing:
FORMER ASSETS OF GENERAL ELECTRIC COMPANY
1543 SOUTH 54TH AVENUE, CICERO, IL 60804**

(Cicero located approximately 9 miles SW of Chicago)

MAP



DRIVING DIRECTIONS

Get on I-90 W which becomes I-90 Express W/I-94 Express W/Dan Ryan Exp. W to I-290 W/Eisenhower Expressway exit, Exit 51H toward West Suburbs. Merge onto I-290 W/ Eisenhower Expressway W via the exit on the Left toward West Suburbs. Take Exit 24A Toward Laramie Avenue. Stay Straight to go onto W Flournoy Street. Turn Left onto S Laramie Avenue. Turn Right onto W Roosevelt Road. Turn Left onto S 54th Avenue. End at 1543 South 54th Avenue, Cicero, IL 60804-1813. **Follow auction signs!**

HOTELS

HOLIDAY INN MIDWAY AIRPORT
800-238-5544

COURTYARD MARRIOTT AIRPORT
773-279-0200

SLEEP INN MIDWAY AIRPORT
708-594-0001



AUCTION

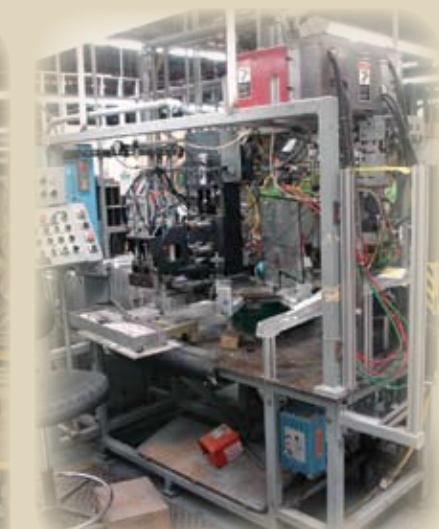


**Appliance Plant Closing:
FORMER ASSETS OF GENERAL ELECTRIC COMPANY
1543 SOUTH 54TH AVENUE, CICERO, IL 60804**
(Cicero located approximately 9 miles SW of Chicago)

THURSDAY, NOVEMBER 6th, BEGINNING @ 9 AM LOCAL TIME



(1 of 6) SMT AUTO BENDERS



ROTARY PIN TO COIL WELDER



(1 of 30) VARIOUS TONNAGE PRESSES

BID LIVE ONLINE AT BIDSPOTTER.COM



Live Internet Bidding
BidSpotter.com®
www.bidsponsor.com to register

Sale Location: 1543 South 54th Avenue, Cicero, IL 60804
Thursday, November 6th Beginning @ 9:00 AM Local Time
Preview Inspection: Wednesday, November 5th - 8:00 AM - 4:00 PM

Live Internet Bidding
BidSpotter.com®
www.bidsponsor.com to register



Auctioneers: Robert Charleston, Chad Olson, Adam Olson, and EJ Olson.
Auction License # 441.001423
1-260-373-0850 • Fax 1-260-373-0854
E-mail: info@charlestonauctions.com • **Website:** www.charlestonauctions.com

PREVIEW: WEDNESDAY, NOVEMBER 5TH - 8 AM - 4 PM LOCAL TIME

SALE: THURSDAY, NOVEMBER 6TH - 9 AM LOCAL TIME

**THINKING OF HAVING AN AUCTION?
CALL TODAY FOR A CONFIDENTIAL MEETING!**



HELIX WELDING STATION



(1 of 2) PAVE VARIFORM AUTO BENDERS



(3 of 19) OAKLEY HELIX WINDERS



HEAVY DUTY SCRAP CHOPPER

ROLLING REDUCER LINES:

- (11) OAKLEY Rolling Reducer Lines
 - (2) 1/2" Lines, Models HE75 & RTL-91, S/N's 13631 & 30798
 - 1/2" Diameter Hopper/Roll Reduce/RTL
 - (1) 1/4" Line, Model 74HF, S/N 12774
 - 1/4" Diameter Hopper/Roll Reduce/RTL
 - (8) 5/16" Lines, Models 75HF/76HF, 19-91, 77HF, RTL-90, 78HF, 10331-5, RTL-96, S-ELECT96, S/N's 29872, 30389, 16456, 29115-A, 34130, 11757, 363-71, 36622
 - 5/16" Diameter Hopper, Roll Reduce/RTL

HEATING ELEMENT FILLING LINES:

- (17) OAKLEY Filling/Sand Pack Lines, Model FM2005, 36FM2005 & 48AFM-95, 3-Phase

AUTOMATIC BENDING EQUIPMENT:

- (7) SMT Auto High Speed Benders for Dishwashing Unit Forming, Calrod Unit Bending & Defrost Heater Element Crimping

HELIX EQUIPMENT:

- (16) OAKLEY Helix Winding Machines
 - Models HOW-92, HW92/HW66, HWT90/HW2, HWT90/874, HW98, HW66, HWT90/HW72, HWT90/HW66, HCW92/HW72, HW98/HW79, (2) - HW98/HW76, (2) - HWT90/HW66
 - All are Single Phase

INFRATROL Helix Wire Dryer, Natural Gas, 400,000 Burner Capacity, S/N 0V6736

1992 BLASDEL ENTERPRISES Helix Washer & Drying Oven, Model HV-3638

PRESSES & PRESS RELATED EQUIPMENT:

- (2) CLEVELAND Stamping Presses, Model 10K-1000Ton, Single Acting, 10 K, 35 SPM, 29 1/2" Shut Height, 1 1/2" Adjustment, 1,000 Ton Capacity, 5" Stroke of Slide, S/N's 10911 & 10963
- BLISS 1,000 Ton Stamping Press, Model 27A-KJ, LOADGARD TREND "Series 4" System, Palm Button Controls, 5" Stroke, Shut Height on Bed 28", 1/2" Adjustment, 43/44 Bed Area, 36/32 Ram Area, 30 SPM, S/N 66001

(2) CLEVELAND Stamping Presses, Model 4K-400 Ton, 18" Shut Height, 1/2" Adjustment, 2 1/2" Stroke, 30 SPM, S/N's 9586 & N/A

CLEVELAND 400 Ton Press, 35 SPM, 21" Shut Height, S/N 10568-2

MINSTER 90-400 Stamping Press - No Other Information Available

(2) CLEVELAND Presses, Model 4K-400, 5" Stroke, 21" Shut Height of Slide, Single Acting, 35 SPM, S/N's 10568-1, 10553-1

BLISS No. 668 Stamping Press, 1,500 Ton Capacity, Model 1500KT, 20 SPM, 5 1/2" Stroke, 34 L-R x 26 F-B Bolster,

Shut Height = 34 1/2" w/1/2" Adjustment, S/N 276934p vp404

L & J Straight Side Press, Model EM75, 75 Ton, 4" Stroke, 4" Adjustment, Shut Height = 15", 36 x 24 Bolster, S/N EM750110A

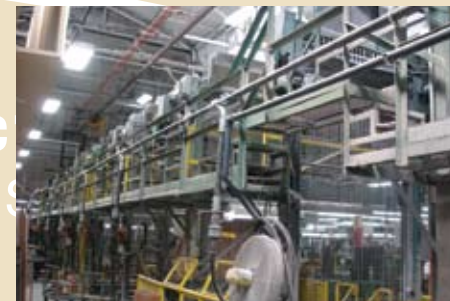
VERSON Press, 45 Ton, Model D-45-OBI, 3" Stroke, 110 SPM, Shut Height = 11 1/2" w/2 1/2" Adjustment, 28 L-R x 18 F-B Bolster

(2) CLEARING OBI Presses, Model 60P730, 60 Ton, 3" Stroke, 75 - 150 SPM, Shut Height = 16 1/2" w/3" Adjustments, S/N's 57-9226 & 57-9227

MINSTER OBI Press, Model OBI No. 6, 32 x 21 Bolster, 90 SPM, 60 Ton, 4" Stroke, Shut Height = 17" w/3" Adjustment, S/N 6-17499

MINSTER OBI Press, Model No.5OBI, 28 x 18 Bolster, 100-200 SPM, 45 Ton, 3" Stroke, Shut Height = 15 3/4" w/2 3/4" Adjustment, S/N 5D-18955

(2) MINSTER OBI Punch Presses, 45 Ton Capacity,



COMPLETE OAKLEY SAND FILLING SYSTEM FOR HEATING ELEMENT ASSEMBLY



MILL MASTER MODEL BT200000SP BURST TESTER



(1 of 6) SMT AUTO BENDERS

28 x 18 Bolster, 180 SPM, 4" Stroke, Shut Height = 12 1/2" w/2 3/4" Adjustment, S/N 520041 & 5-19965

ROUSSELLE OBI Press, Model NO4, 40 Ton Capacity, 4" Stroke, 11" Shut Height, 3 1/2" Adjustment, 150 SPM, S/N 25927

(3) ROUSSELLE OBI Presses, Model NO3, 25 Ton Capacity, 4" Stroke, 8 3/4" Shut Height, 2" Adjustment, 135 SPM, S/N's 23953, 23954 & N/A

MINSTER OBI Punch Press, 28 L-R x 18 F-B Bolster, 180 SPM, 45 Ton, 4" Stroke, 2.75" Shut Height w/13" Adjustment

(2) L & J OBI Presses, 45 Ton, 3" Stroke, S/N's 45791A & 45792A

(5) WALSH OBI Punch Presses, Model 38X

BLISS No. 24 400 Ton Stamping Press, S/N T-33274

KR WILSON Hydraulic Press, Model DS-SAB, 2,000 Ton Capacity, S/N 10561-001

DANLEY 4-Post Hydraulic Press

(3) EGAN PRESS PARTNER Straighteners & Decoilers

FURNACES & OVENS:

Heavy Duty Industrial Oven, Model LTE, 1,250 Degrees F, 42 x 36 x 42, S/N 100346

(3) GENERAL ELECTRIC Anneal Furnaces

(Over 10) Various Heatreat/Cure Ovens

MILLING & DRILLING MACHINES:

LAGUN-O-MATIC 350 CNC Vertical Milling Machine, GE Mark Century 1050 Controls, Tracer Head, 10" x 56" T-Slot Table

BRIDGEPORT Vertical Milling Machine, Series I, 2 HP, 9" x 42" T-Slot Table, BRIDGEPORT 2-Axis DRO, BRIDGEPORT Multi-Head Attachment

PRATT & WHITNEY Jig Bore, Model NO2A, S/N 773

GORTON 'Master Mill' Vertical Milling Machine, 2 HP, 9" x 42" T-Slot Table, S/N 130579

BRIDGEPORT Vertical Milling Machine, 1 HP, 9" x 42" T-Slot Table, S/N 167163

LUCAS 4" Horizontal Boring Mill, Model 42B-60, S/N 42B1872

(2) AMERICAN Hole Wizard Radial Arm Drill, 13" Column, 5" Arm

WILLIS MODIG Radial Drill Press, Model RBM 28B, S/N 5672

CINCINNATI Vertical Milling Machine, 9" x 42" T-Slot Table, Power Feed, Universal Tapping Head

K & T Universal Mill, 12" x 60" T-Slot Table, S/N 14-7350

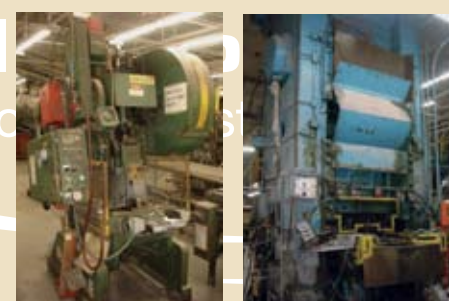
CINCINNATI 24" Heavy Duty Shaper



(OVER 10) CLEVELAND 200-400 TON STAMPING PRESSES



LEFT PIC: (OVER 20) VARIOUS BLISS, CLEARING, CLEVELAND, VERNON AND MINSTER
RIGHT PIC: (1 of 2) CLEVELAND 1,000 TON PRESSES



LEFT PIC: (1 of 4) ROUSSELLE 45 TON OBI PUNCH PRESSES
RIGHT PIC: CLEVELAND 1,000 TON PRESS

(3) AVEY Drill Presses, 30" x 30" Table Size, Model 3397

(2) LELAND GIFFORD Single Spindle Drill Presses

LATHES:

(5) SOUTHBEND Precision Lathes, 3 1/2" Bed, S/N's 9033RKL14, 19821RXX, 20536R, 19823RXX, 19822RXX

(3) HARDINGE Speed Lathe, Model HLV, 1 HP, 14" Swing

TOS Gap Bed Lathe, Model SN55B, 40" Swing, S/N 055300800448

LODGE & SHIPLEY 14" Engine Lathe, 2 1/2" Spindle Hole, S/N 41902

REED 14" Sliding Gear Head Lathe, 22 - 536 RPM, S/N 37922

GRINDING & BUFFING EQUIPMENT:

OKAMOTO Hydraulic Surface Grinder, Model 'ACCUGAR-124N, 12" x 24" Electro-Magnetic Chuck, S/N 6310

LANDIS Universal Grinder, Model 932-K54076, 10" x 24", S/N 537-3

MOORE No. 2 Jig Grinder, S/N 7625

Lg. Qty. Of COVEL, BROWN & SHARPE, REID, BOYAR SCHULTZ 6 x 18 Surface Grinders

MATTISON Surface Grinder, Model S30, 2 1/2' x 9' Magnetic Chuck, S/N 8865899X

Lg. Qty. Of Various Horizontal, Vertical, Pedestal, Belt, Disc Sanders/Grinders/Buffers

SAWS:

MARVEL No. 8 Tilting Head Vertical Band Saw, Model 8/M1, Series 8, S/N 86063

Do ALL Vertical Band Saw, Model 16-2, 16" Throat, 24" x 24" Tilting Table, 3-Phase, S/N 45-53177

MARVEL Power Hack Saw, Model 9, S/N 98766

MARVEL High Speed Hack Saw, Ball Bearing No. 6A

1979 GROB Vertical Band Saw, Model 4V-15, Blade Welder, Tilting Arbor, 30" x 30" Table Size, 18" Throat, S/N 3567

PAT MOONEY Cut-Off Saw, Model FHC-275SA, 1 HP

WELDING EQUIPMENT:

MILLER Model SRH-222 Arc Welder, S/N JA449420

MILLER Syncrowave 350XL Welder, S/N LC010242

(4) TAYLOR WINFIELD Spot Welders, Model ENB-12-50 Air, 50 KVA

(2) FEDERAL Dbl. Spot Welders, Model 'Spot Welder', 50 KVA, S/N's 36672-20 & 36672-10

KR WILSON Spot Welder

Huge Qty. Of Various Manufacturers & KVA Spot Welders

FABRICATION EQUIPMENT:

HILL ACME Metalworker, Model #4, S/N 7704-798-07-V

ROTEX Rotary Punch, Model 18BK-56, S/N 12022

CHICAGO 4' Finger Brake, Model L-31, S/N 102141

CINCINNATI Mechanical Shear, Model 1004-R, 10 Ga. Mild Steel - 16 Ga. Max., 4', Manual Back Gage

PULLMAX Circle Shear, Model P-5, 36" Throat, S/N 52684

RICHARDS Multi-Form Bender, S/N 304BB-B

Lg. Qty. Of Fabrication Equipment (I.E. Table Mount Shears, Crimpers, Punches, Brakes, Seamers, Filers, Rolls, Notchers

MATERIAL HANDLING EQUIPMENT:

(4) HYSTER Electric Fork Trucks, 36 Volt, 2-Stage, Alarms

& Lights, Clearview Mast, Clamp Attachment, 128" Lift Height, 3,000 Lb. Capacity, S/N's C108V04B17G, C108V02740G, C108V04316G, C108V04255G

Various EXIDE, HOBART, WORKHOG, HERTNER 36 & 48 Volt Chargers

Lg. Qty. Of Electric Walk-Behind Pallet Trucks, Tuggers & Carts

PLANT SERVICING EQUIPMENT:

(2) BURNHAM Boilers, Model 4FL-277-50-G-GP, Gross Output - 55.4 HP, 1,855 MBH, 1,911 Lbs./Hr.

MINUTEMAN Power Boss Floor Scrubber, Model PB380360P 380 Sweeper, w/36 Volt Charger, S/N VPB38036QP0814

TENNANT 64V0 Floor Sweeper, w/36 Volt Charger, Riding, Electric, S/N 6400-1423

DEMARCO Portable Dust Collector w/Silencer Base, 25 HP Blower Motor, w/MAXCARTRIDGE Filter, Model MK25E

RIDGID Power Threader, Model 535, All Tooled Up, S/N 60801

Huge Parts Crib & Inventory (**FAR TOO MUCH TO LIST!**)

Huge Qty. Of Various Tonnage & Capacity Bridge Cranes, Jib Cranes, Hoists & Lifts

Lg. Qty. Of Workbenches, Lab Tables, Cabinets, Lockers, Stands, Tables, Fans, Roll Around Ladders, Safety Equipment, Step Ladders, Microwaves, Café Chairs & Tables, Microwaves & Refrigerators, Welding Curtains, Roll Around Stands, Material Carts, Pallet Jacks, Dollies, Movers, Toolboxes, Parts Bins, Pan Shelving, Pallet Racking, Buss Duct, Ect. - **SOMETHING FOR EVERYONE!**

QUALITY CONTROL & INSPECTION EQUIPMENT:

Huge Qty. Of Q.C. Equipment (I.E. Comparators, Surface Plates, Gages, Slopes, Micrometers, Calipers, Height Gages, Dial Indicators, Gage Blocks -

FAR TOO MUCH TO LIST- PLEASE CALL FOR DETAILS!

TEST LINES:

(6) Complete Test Conveyors used to test Calrod Units - 6" & 8" - Each line contains (6) 30 KVA Transformers per Line w/STACO Automatic Voltage Regulators

(2) Heavy Duty Test Conveyors used to test Bake & Broil Units

MISCELLANEOUS EQUIPMENT:

SUNNEN Hone, S/N 5585

Huge Qty. Of Machine Tools (I.E. Machine Vises, Rotary Tables, Rotary Cross Slide Tables, Perishable Tooling, Angle Blocks, Tool Holders, Chucks, Fixtures, Lathe Tooling, Mill Tooling, Collets, Etc. - **HUGE, HUGE QUANTITY - PLEASE CALL FOR DETAILS!**



LEFT PIC: WILTON RADIAL ARM DRILL
RIGHT PIC: G & L HYDRAULIC SURFACE GRINDER



LEFT PIC: HILL ACME IRON WORKER
RIGHT PIC: DOALL VERTICAL BAND SAW



(OVER 5) HARDINGE & SOUTH BEND SECOND OPERATION LATHES



VARIOUS REID, COVELL & BROWN & SHARPE SURFACE GRINDERS



OKAMOTO HYDRAULIC SURFACE GRINDER



LANDIS O.D. GRINDER



(OVER 20) VARIOUS DISPATCH TYPE OVENS & FURNACES



On-line Bidding Instructions

- TO PARTICIPATE, YOU MUST:**
1. Type in www.bidspotter.com (make sure nothing is after .com)
 2. Find auction in upcoming auctions and click on sign up for this auction
 3. Left Side - click on New to bidspotter.com and then click on Register
 4. Fill out bidder registration
 5. Exit out and re-enter on www.bidspotter.com
 6. Click on Sign-up and then Sign In (already a bidspotter user)
 7. Utilize User Name & Password emailed to you after registering
 8. Exit out again and re-enter www.bidspotter.com
 9. Click on Bid Now
 10. START BIDDING!
 11. Bid with Bid Now Button for faster bidding

ALL ON-LINE BIDS ARE SUBJECT TO A 15% BUYER'S PREMIUM, CASH OR CHECK. 18% BUYERS PREMIUM IF PAID BY MASTERCARD OR VISA