



433 Council Drive, Fort Wayne, Indiana 46825

We have been commissioned to liquidate equipment & assets surplus to the need of:

GENERAL ELECTRIC COMPANY

Sale Location: 3122 Oxmoor Industrial Blvd., Dothan, AL

THURSDAY, MAY 11 • 10:00 AM

Public Inspection: Wednesday, May 10 - 9:00 AM-5:00 PM

MAY						
S	M	T	W	T	F	S
	1	2	3	4	5	6
7	8	9	10	11	12	13
14	15	16	17	18	19	20
21	22	23	24	25	26	27
28	29	30	31			



First Class Mail
U.S. POSTAGE
PAID
Fort Wayne, IN
Permit No.
1719

AUCTION



We have been commissioned to liquidate equipment & assets surplus to the need of:

GENERAL ELECTRIC COMPANY

Sale Location: 3122 Oxmoor Industrial Blvd., Dothan, Alabama

THURSDAY, MAY 11TH • 10:00 A.M.



WYSONG 52 INCH SHEAR



MINSTER 60 TON PUNCH PRESS & POWERMATIC VERTICAL BAND SAW

AUCTION

Surplus To The Needs Of:
GENERAL ELECTRIC COMPANY



DYNAMOMETER, MODEL 81110



(2) BINKS PAINT BOOTHS

BidSpotter.com
Live Interactive Auction Webcasts!

LIVE INTERNET BIDDING AUCTION

Visit BidSpotter.com to register and view the terms of the auction.



GRIEVE ELECTRIC OVEN



NIAGARA PUNCH PRESS

Preview Inspection: Wednesday, May 10th • 9:00 A.M. - 5:00 P.M.

SALE LOCATION: 3122 Oxmoor Industrial Blvd., Dothan, AL **DATE & TIME:** The Auction will begin promptly at 10:00 A.M. Local Time on Thursday, May 11, 2006. The doors will open at 8:00 A.M. auction day for final inspection and bidder registration. **PREVIEW INSPECTION:** The items will be available for advance inspection from 9:00 a.m. – 5:00 p.m. Local Time on Wednesday, May 10, 2006. **TERMS OF SALE:** A 10% Buyer's Premium will be charged on all purchases if paid by Cash Or Check. 13% if paid by MasterCard or VISA. All bidders must register and provide proper identification. All items are sold "as is, where is" and must be paid for IN FULL on sale day in CASH, CHECK OR MASTERCARD OR VISA, accompanied by A LETTER FROM THE PAYOR'S BANK GUARANTEEING UNQUALIFIED PAYMENT TO CHARLESTON AUCTIONS for this sale. **REMOVAL:** All rigging and moving companies must show proof of insurance. No items will be removed without proof of payment. Removal times will be at the conclusion of the sale until 5:00 P.M. & on May 12th – 19th from 8:00 A.M. – 5:00 P.M. Local Time. **ALL ITEMS MUST BE REMOVED BY MAY 19, 2006. THERE IS NO RIGHT TO ABANDONMENT OF ANY ITEMS.** If additional time is needed, please contact the auction company to schedule an appointment. Lots not paid for and/or removed within the time allowed may be resold at public or private sale without further notice, and any deficiency, together with all expenses and charge of resale, will be charged to the defaulting purchaser. Your stamped paid receipt must be shown to checkout supervision prior to removal. Although checkout supervision will be provided, the auction company and sellers are not liable for lost or stolen items purchased at the sale. **NOTE:** whole all information contained in this brochure and other advertising has been obtained from sources deemed reliable, neither the auction company, seller nor publisher shall be liable for any errors or for the correctness of descriptions. All purchases are made "as is, where is" based entirely on the personal inspection and/or opinion of the purchaser and without warranty or guarantee of any kind. Statements made sale day take precedence over printed matter.



433 Council Drive, Fort Wayne, IN 46825
1-260-373-0850 • Toll Free 1-877-301-9344 • Fax 1-260-373-0854
Email us at info@charlstonauctions.com or visit our website at www.charlstonauctions.com



(1) OF (2) PRECISION WELDERS



16 ROW TORIT DUST COLLECTOR



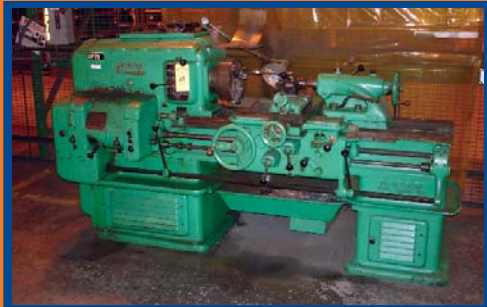
POWERMATIC VARIABLE SPEED DRILL PRESS



SM. QTY. OF TOOLS & TOOLING



1994 ATLAS COPCO 150 HP ROTARY AIR COMPRESSOR



AMERICAN PACEMAKER ENGINE LATHE

PRESS & METAL WORKING EQUIPMENT

- MINSTER 6 Fixed Base Press, 120 SPM, 60 Ton, 4" Stroke, 2 3/4" Adjustable Slide
- 1976 MOORE-HANDLEY 4-Post Up-Acting Press, Model 18-360, 50 Ton Capacity
- WYSONG Shear, Model H-52, 16 Ga. Capacity, 52", S/N H-52-493

MILLING & DRILLING MACHINES

- POWERMATIC Variable Speed Drill Press, Model 1150A

LATHES, SAWS & GRINDING EQUIPMENT

- (2) AMERICAN PACEMAKER Engine Lathes, 14" Swing, 30" BTC, 2" Spindle Hole, All Tooled Up
- WARNER SWASEY Turret Lathe, Model M-3400
- POWERMATIC Vertical Band Saw, Model 87, 24"
- Sm. Qty. Of Various Surface & Pedestal Grinders

MOTOR TEST & WELDING EQUIPMENT

- 1978 DC Dynamometer, Model 81110, 190 HP, 4,000 - 8,000 RPM, w/Tooling
- Sm. Qty. Of Various Welding Units & Support Equipment

OVENS & PAINT RELATED EQUIPMENT

- GRIEVE Electric Oven, Model HB650
- (2) BINKS Paint Booths, w/Air Make-Up, Chain Hoist, Filtration, GRACO Paint System

MISCELLANEOUS EQUIPMENT

- GLOBE Banding Lathe, 28" Swing x 72" BTC, 460 Volt, Banding Attachment w/Tension Adjustment, S/N BLH-18-6468
- Lg. Qty. Of Various Plant Support Equipment (I.E. Safety Ladders, Hose Reels, Banding Carts, Workbenches, Floor Fans & Rotary Parts Bins, Material Storage Rack, 15-Bay Gravity Feed, Aluminum Picnic Tables, Etc.)

MATERIAL HANDLING EQUIPMENT

- STANLEY VIDMAR Automatic Die Storage System, Each Shelf Supports 2,000 Lbs., Model SVR2, Completely Adjustable
- Lg. Qty. Of Various Crane & Jib Systems 500 - 5000 Lb. Capacity
- Lg. Qty. Of Pallet Racking, Conveyor, & Pan Shelving

PLANT SERVICING EQUIPMENT

- TORIT Dust Collection System, 16 Rows Air Accurated Bag System
- 1994 ATLAS COPCO Rotary Air Compressor, Model GA-110, 150 HP
- 1994 ATLAS COPCO Horizontal Air Compressor, Model GAU-40
- Refrigerated Air Dryer, Model 1000
- 1994 OLYMPIAN Generator, Model 94A02701S

**FAR TOO MUCH SHOP & SUPPORT EQUIPMENT TO LIST!
DON'T MISS THIS ONE OF A KIND OPPORTUNITY TO BID YOUR PRICE!**

**ALL ITEMS IN THIS SALE CAN BE BID UPON PRIOR TO THE AUCTION VIA OUR WEBSITE @ WWW.CHARLESTONAUCTIONS.COM.
THE AUCTION WILL BEGIN ON APRIL 28, 2006 & END ON MAY 10TH.
THE HIGHEST BID FROM THE ABSENTEE BIDS WILL THEN BE CARRIED OVER TO THE LIVE AUCTION ON MAY 11, 2006. AT THAT TIME THE ITEM WILL BE SOLD VIA THE LIVE INTERNET AUCTION. THE FINAL BID AMOUNT WILL BE DETERMINED BASED ON THE ABSENTEE BIDS & THE LIVE ONLINE AUCTION PARTICIPATION. PLEASE CALL WITH ANY QUESTIONS!**

OFF-SITE ITEMS

**1371 Hodgesville Rd., Dothan, AL
Available for inspection preview day only!**

- NIAGARA 60 Ton Punch Press, Model M-60, 4" Stroke, 14" Shut Height, 3" Slide Adjustment, 32" x 21" Bed, 21" x 16" Slide, 100 Strokes per Minute, 460 Volt, S/N 49905
- NIAGARA 45 Ton Punch Press, Model M-45, 3 1/2" Stroke, 12" Shut Height, 2.62" Slide Adjustment, 28" x 18" Bed, 18" x 24" Slide, 110 Strokes per Minute, 460 Volt, S/N 49768
- DAKE 4-Post, Push Up Hydraulic Press, 50 Ton, 24" x 24" Bolster, 460 Volt, S/N 175810
- ERIE FOUNDRY COMPANY Center Piston, Push Down Hydraulic Press, 75 Ton, 24" x 24" Bolster Plate, 75 Ton, 460 Volt, S/N 1234
- ERIE FOUNDRY COMPANY 4-Post, Push Up Hydraulic Press, 25 Ton, 16" x 24" Bolster, 460 Volt, S/N 1233
- Vibratory ROTO-FINISH Deburring Machine, Model #1813 'SPIRATRON', Extended Range Series, 460 Volt, S/N ERC-0405B COMBO
- INGERSOLL-RAND Reciprocal Air Compressor, Model LL5A150/Q, 150 HP, 16 1/4" x 10 x 5, 830 RPM, 125 PSI Discharge Pressure, 460 Volt, S/N L1200D93B
- 1985 CINCINNATI MILICRON T-30 Horizontal Machining Center, Model T-30, 10 Pallet Changer, 31.5 x 31.5 Pallets, 460 Volt, GE 2000 CNC Control, Chip Conveyor, 90 Tool Changer, Full 4th Axis, S/N 3123Z0185-0002
- 1985 GIDDINGS & LEWIS 48" N/C Vertical Turret Lathe, Model 512-172, 48" Table, 12 Tool Changer, 460 Volt, GE 2000 CNC Control, Chip Conveyor, 4-Jaw Table, (2) 48" 4-Jaw Face Plate Fixtures, S/N 512-172-82
- 1980 MONARCH SIDNEY 75 N/C Lathe, Model #75, 460 Volt, 8-Station Side Turret, 2-Jaw Chuck, GE1050T N/C Control, 460 Volt, S/N 52631-NCB
- 1980 BROWN & SHARPE N/C Vertical Machining Center, Model 1500, 460 Volt, S/N 517-3-278, w/ GE 1050MC Control, Model 1050MC, Cabinet Style, S/N 183664R
- CINCINNATI Vertical Mill, Model No. 2, 575 Volt, S/N 4A2V1J-19
- GOODMAN Automatic Turret Lathe, Model 6DREL, Approximately 24" Swing, 460 Volt, S/N 71918R673
- Surface Combustion Batch Annealing Furnace, Model 36-48-30 B.T.O., 36" x 48" x 30", 1,500 Degrees F, 120KW, 460 Volt, 3-Phase, 60 Hertz, w/SPANG Power Control Unit, Type E7290, S/N KPC6118-1, Input 490v, 3-Phase, 60 Hertz, Output 480 VAC, 145 Amp, S/N CC-12129-1
- 1993 WISCONSIN Batch Oven, Model CM03315, 1 Chamber w/2-Doors, Outside 44" x 95" x 85" H, Inside 40" x 82" x 81" H, 460 Volt
- WISCONSIN Electric Batch Oven, Model SWN 6/4/7-E/DRAWER, 500 Degrees F, 1 Chamber but 4-Drawers, Inside 6' W x 4' D x 7' H, 460 Volt, Input/hr = 36KW, Insurance = FM, S/N 025228903
- YOUNG BROTHERS Electric Oven, Model L-2, Door 24" W x 24" H, Depth 24", Outside 33" W, 30" D, 58" H, 460 Volt, 800 Lb., S/N 6110
- YOUNG BROTHERS Electric Oven, Model 6111, Model L-3, Door 24" W x 36" H, Depth 24", Outside 40" W x 36" D x 75" H, 460 Volt, 1,000 Lb., S/N 6111
- TARGET Concrete Saw, Model 8226A, Gasoline, KOHLER 14 HP Gasoline Engine, S/N PAC1145
- SOUTHWARK-EMORY Tensile Testing Machine, Model 60,000 Test, 4-Range, 60,000 Test Capacity, S/N 65230



(1) OF (2) YOUNG BROS. ELECTRIC OVENS



1993 WISCONSIN BATCH OVEN



(2) NIAGARA PUNCH PRESSES

OFF-SITE ITEMS WILL BE AVAILABLE FOR PREVIEW & INSPECTION ONE DAY PRIOR TO AUCTION. THESE ITEMS WILL BE SOLD LIVE VIA A PROJECTION SCREEN & THROUGH WWW.BIDSPOTTER.COM.



LIVE INTERNET BIDDING AUCTION

On-Site Manager - Mike Nelson (260) 403-7268

DRIVING DIRECTIONS

TO THE AUCTION SITE -
3122 OXMOOR INDUSTRIAL BLVD., DOTHAN, AL

65 South To Montgomery, AL
80/82 East (Exit 168) to 231 South
Follow 231 South to Dothan, AL (Approx. 100 Miles)
Left onto Napier Field Rd. To Baggett Road & Sale Site
FOLLOW AUCTION SIGNS!!

OFF-SITE ITEMS SALE SITE - Preview Day Only!
1371 HODGESVILLE RD., DOTHAN, AL

Baggett Road to Napier Field to 231 South
Follow to Ross Clark Circle
Go Right to Hodgesville Road (Approx. 10 Miles)
FOLLOW AUCTION SIGNS!!



ROTO-FINISH DEBURRING MACHINE



BARBER-COLEMAN HOB SHARPENER



1985 G & L 48 INCH VERTICAL TURRET LATHE