



433 Council Drive, Fort Wayne, IN 46825

Surplus to the on-going needs of:
CONNOR CORPORATION

Sale Location: 2701 Dwenger Avenue, Fort Wayne, IN 46803

WEDNESDAY, OCTOBER 3rd - Beginning at 10:00 AM

Preview Inspection: Tuesday, October 2nd
9:00 AM-5:00 PM

**THINKING OF SELLING YOUR
REAL ESTATE?**

Consider the Auction Method!

Call a Charleston rep. today for
a confidential meeting.

877-301-9344

FIRST CLASS
U.S. POSTAGE
PAID
FORT WAYNE, IN
PERMIT #1420

AUCTION

Surplus to the on-going needs of:

CONNOR CORPORATION

2701 Dwenger Avenue, Fort Wayne, IN 46803



WEDNESDAY, OCTOBER 3rd • BEGINNING AT 10:00 AM

OCTOBER

SUN	MON	TUE	WED	THU	FRI	SAT
	1	2	3	4	5	6
7	8	9	10	11	12	13
14	15	16	17	18	19	20
21	22	23	24	25	26	27
28	29	30	31			

WWW.CHARLESTONAUCTIONS.COM

AUCTION

Surplus to the needs of:

CONNOR CORPORATION

2701 Dwenger Avenue, Fort Wayne, IN 46803

Sale Date: Wednesday, October 3rd - Beginning at 10:00 AM



MAP



DRIVING DIRECTIONS

Take Jefferson Blvd. East toward New Haven ... Turn left on Glasgow Ave...turn right on Dwenger Ave ... **follow auction signs.**

Take Washington Blvd. East toward downtown Fort Wayne ... Turn right on Glasgow Ave ... turn right on Dwenger Ave ... **follow auction signs.**

View complete on-line catalog at www.charlestonauctions.com. Watch for additional items to be added daily.

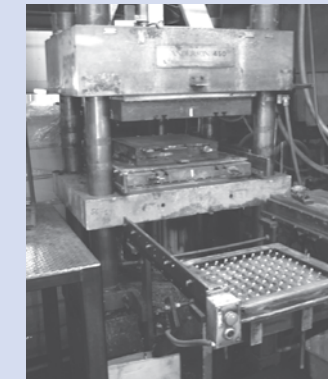
UPCOMING AUCTIONS

GE COMPANY - Bridgeport, Connecticut
Sale Date & Time: Wednesday, October 11th, 2007
10:00 a.m. (Local Time)

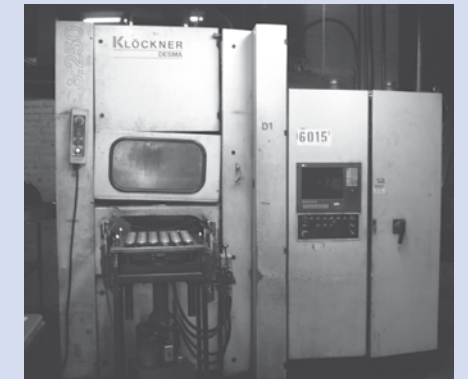
LEO DISTRIBUTORS, INC - Fort Wayne, IN
Sale Date & Time: Saturday, November 17th, 2007
10:00 a.m. (Local Time)



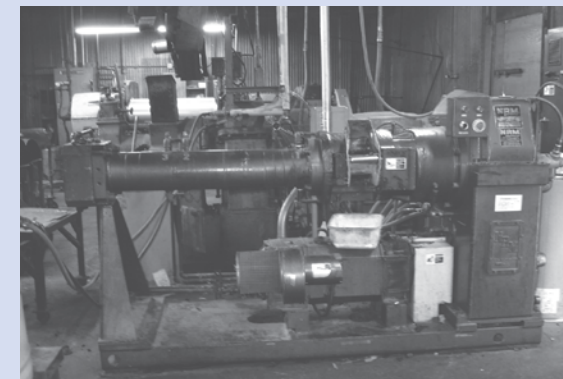
(4) ERIE COMPRESSION PRESSES



(1 OF 2) ANDERSON 450 SHUTTLE PRESSES



(1 OF 2) KLOCKNER PRESSES



NRM RUBBER EXTRUDER



150 HP. FARREL RUBBER MILL



(1 OF 4) FRENCH COMPRESSION PRESSES



Live Internet Bidding

BidSpotter.com

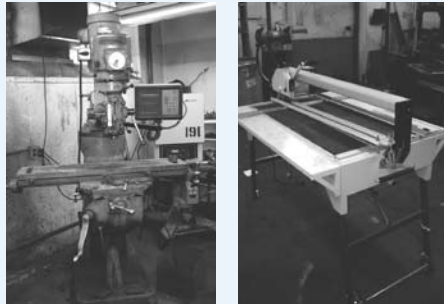
www.bidspotter.com
to register

Sale Location: 2701 Dwenger Avenue, Fort Wayne, IN 46803
Wednesday, October 3rd - Beginning at 10:00 AM
Preview Inspection: Tuesday, October 2nd - 9:00 AM - 5:00 PM

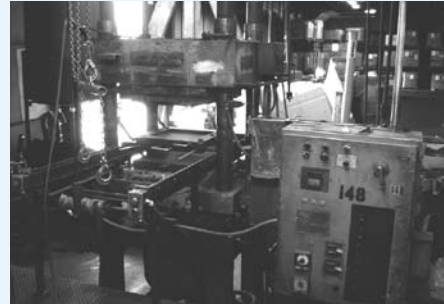


Auctioneers: Robert Charleston AU01042047, Chad Olson AU10400029,
Adam Olson AU10700007 Company AC68900001
433 Council Drive, Fort Wayne, Indiana 46825
1-260-373-0850 • Toll Free 1-877-301-9344
Fax 1-260-373-0854
E-mail: info@charlestonauctions.com • Website: www.charlestonauctions.com





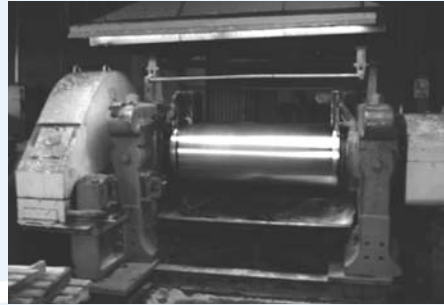
LEFT: (1 OF 2) BRIDGEPORT VERTICAL MILLS
RIGHT: 2007 QEP TILE SEW



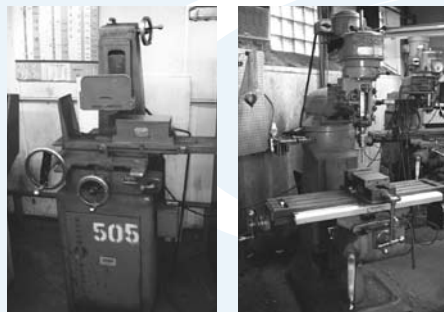
ANDERSON 450 SHUTTLE PRESS W/ BELLOWS HYDRAULIC POWER UNIT



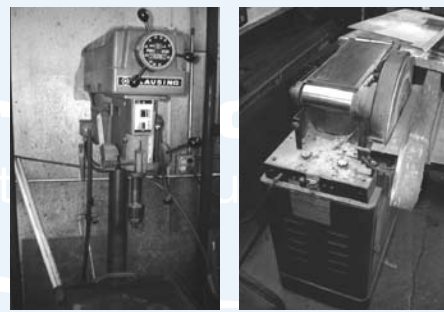
(2) BOLLING PRESSES



150 HP FARREL RUBBER MILL



LEFT: BOYAR SCHULTZ 612 SURFACE GRINDER
RIGHT: BRIDGEPORT VERTICAL MILL



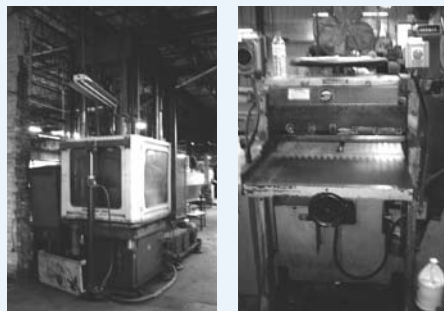
LEFT: CLAUSING VARIABLE SPEED DRILL
RIGHT: DAYTON 6X12 BELT & DISC SANDER



TINIUS OLSEN COMPRESSION TESTER



LEFT: CATERPILLAR FORK TRUCK
RIGHT: HYSTER 8000 LB FORK TRUCK



LEFT: KLOCKNER PRESS
RIGHT: CHALLENGE PAPER CUTTER



LEFT: KALAMAZOO HORIZONTAL BAND SAW
RIGHT: (1 OF 2) HYSTER 5000 LB. ELECTRIC FORK TRUCKS

PRESS & PRESS RELATED EQUIPMENT:

(2) 1993 KLOCKNER Injection Presses, Model 68-250, Max. Daylight – 30 1/2", Platen Size – 30 3/4" x 26 1/2", Tie Bar Spacing – 26 3/4", Heat Type – Electric, Rail Type – Injection, Adjustable Pressure

KLOCKNER Injection Press, Model 966-01/304, Electric Heat, Adjustable Pressure, S/N 11-19053

(4) FRENCH Compression Presses, Max. Daylight – 14 1/4", Min. Daylight – 4", Platen Size – 36" x 36", Tie Bar Spacing – 37", Heat Type – Steam

(2) ANDERSON 450 Up-Acting Shuttle Presses, Both w/BELLOWS Hydraulic Power Units, Max. Daylight – 22 1/2", Min. Daylight – 4 3/4", Platen Size – 30" x 30", Tie Bar Spacing – 33 7/8", Heat Type – Electric, ALLEN BRADLEY 'Slick 50' Processor

(2) ROBA 4-Post Molding Presses

CONTINENTAL 4-Post Molding Press

(4) EEMCO Compression Presses, Max. Daylight Ranging from 13 1/2" – 17 1/2", Min. Daylight 4", Platen Size Ranging from 36 x 30 – 36 x 36, Tie Bar Spacing Ranging from 31" – 37", Steam Heat, New Insulation, w/ALLEN BRADLEY Processors – All (4) Presses Run On A Central Hydraulic System

(2) EEMCO Book Presses, Max. Daylight – 15" – 16 3/8", Min. Daylight – 4", Platen Size – 29 x 24, Tie Bar Spacing – 28", Electric Heat, New Insulation, w/ALLEN BRADLEY Processors

BOLLING Electric Book Press, Max. Daylight – 9 3/4", Min. Daylight – 3 3/4", Platen Size – 14 x 14, Tie Bar Spacing – 14 1/4", Adjustable Pressure

(3) EEMCO Shuttle Presses, Max. Daylight – 15 1/4", Min. Daylight – 4 1/2", Platen Size – 24 x 24 – 30 x 24, Tie Bar Spacing – 31", Steam Heat, Adjustable Pressure, w/ALLEN BRADLEY Processors – All (3) Presses Run On A Central Hydraulic System

(3) Shuttle Presses, Max. Daylight – 18 3/8", Min. Daylight – 5 5/8", Platen Size – 18 x 18, Tie Bar Spacing – 20 1/2", Electric Heat, Adjustable Pressure, w/ALLEN BRADLEY Processors – All (3) Presses Run On A Central Hydraulic System

(4) Various Shuttle Presses, Max. Daylight – 12 1/2" – 15 1/2", Min. Daylight – 4", Platen Size – 24 x 24, Tie Bar Spacing – 24 1/4", Steam Heat, w/ALLEN BRADLEY Processors – All (4) Presses Run On A Central Hydraulic System

WABASH Self-Contained Book Press, Max. Daylight – 8 1/2", Min. Daylight – 4", Platen Size – 12" x 15 1/4", Tie Bar Spacing – 16 5/8", Steam Heat

RUBBER MILLING & EXTRUSION EQUIPMENT:

NRM Rubber Extruder, Model 4 1/2 Rubber Screw Extruder, Ratio 25.14/L, 460 Volt, 3-Phase, 60 HZ, w/(3) SENTRA Temperature Zone Controllers, S/N T22645

NATIONAL Rubber Extruder, Model #6

FERREL 60" Open Mixing Mill, w/HORTON Disc Brake "Safety" System, 150 HP AC Motor w/Electronic Controls, Overhead Exhaust Unit, w/Sheet Off Knife

ANDERSON 60" Open Mixing Mill, w/EATON "Safety" Brake System, 150 HP AC Motor, w/Sheet Off Knife

BOLLING 18" Rubber Mill, S/N 5241

MACHINE SHOP EQUIPMENT:

BRIDGEPORT Vertical Milling Machine, 1 1/2 HP, Servo Power Feed, 9" x 36" T-Slot Table, w/ANILAM 'Micro Wizard' DRO, S/N BR52413

BRIDGEPORT Vertical Milling Machine, 1 HP, Servo Power Feed, 9" x 36" T-Slot Table, w/ACU-RITE 'Qwikcount' II DRO, S/N BR163468

2007 QEP Tilecutting Bridge Saw, Model 83240, 40" Capacity, 5 HP, 10" Blade, 5/8" Arbor, 3,550 RPM

SOUTHBEND "Nordic" 15 Tool Room Lathe, 15" Swing, 2" Spindle Hole, ALORIS Tool Post Holder, Metric & Standard Capable, S/N C115810430AD92

KALAMAZOO Horizontal Metal Cutting Band Saw, Model H9AWV, S/N 14464

CLAUSING Variable Speed Drill Press, Model 1767, S/N 517813

BOYAR SCHULTZ 612 Surface Grinder, Model 612, 6 x 12 Electromagnetic Chuck, S/N 14335

DAYTON 6 x 12 Belt & Disc Sander, Model 4TJ97, 1 HP

BALDOR Pedestal Grinder, Model 8102W, 3/4 HP, 3-Phase, 1,500 – 1,800 RPM, S/N P9-97

IDEAL Arc Welder, Model R3R-500

Lg. Qty. Of Various Pedestal Grinders, Parts Washers, Safety Ladders, Flammable Liquid Storage Cabinets, Floor Fans, Steel (Salvage) Welders, Sanders, Spare Parts, Chop Saws, Scales, Perishable Tooling, Etc. – **FAR TOO MUCH TO LIST!**

PLANT SERVICING EQUIPMENT:

1991 CLEAVER BROOKS CB Packaged Boiler, Fire Tube Type, Gas Fired, Model CB700-200, 3-Phase, 10 HP Blower Motor, w/All Accessories (In Operation – To Sell As Package)

RIDGID 535 Power Threader, Model 535, 1-Phase, w/Dies & Tooling, S/N 387222

INGERSOLL RAND Rotary Screw Air Compressor, Model 50L-SP, 3-Phase, 60 HP Motor, S/N H0395

KELLOGG Horizontal 2-Stage Air Compressor, 15 HP

MISCELLANEOUS EQUIPMENT:

BLUE M Electric Oven, Model OV-472A-3, Temp. Range 38° C – 260° C, S/N OV-6061

GIUSTINA O.D. Buffer/Grinder, Model 1054

CINCINNATI O.D. Buffer/Grinder

CHALLENGE Paper Cutter, Model HAE, Size 265, S/N 21393

JENCO Cleaner/Dryer, Model 12780, S/N 55

JENCO Cryogenic Deflasher

Various Dry Type Tumblers, Sorting Tables, Workbenches, Cut-Off Units

MATERIAL HANDLING:

CATERPILLAR 5,000 Lb. Fork Lift, Model V-50-D, LP Gas, Triple Mast, Side Shift, 48" Forks, Air Tires

(2) 2001 HYSTER 5,000 Lb. Fork Lifts, Side Shift, 48" Forks, Electric w/Good Battery, 1 Year Warranty on Battery, Cushion Tires

HYSTER 8,000 Lb. Fork Lift, 2-Stage Mast, Side Shift, Cushion Tires, Good Battery, 1 Year Warranty on Battery

LAB & TEST EQUIPMENT:

TINIUS OLSEN Compression Tester, w/MITUTOYO DRO, WOODS E-Trol Plus DC Controls, Select Drive, Calibrated 3-6-07, 0 – 12,000 Lb. Capacity, S/N 94222-3

TECH PRO Rheotech Test Unit, Updated Software, DAISYWIN – March 2007

MOONEY STI Viscosimeter

OFFICE EQUIPMENT & FURNISHINGS:

50' x 18' Self-Contained Mobile Office Trailer, w/ Air Conditioning, Power (Complete)

HEWLETT PACKARD 'Design Jet' 750C Plotter, Model B94C3195A, S/N ESA6540639

Lg. Qty. Of Desks, Swivel Chairs, End Chairs, Credenzas, Bookcases & Shelving, Floor Mats, Trash Cans, Etc.



Visit the marketplace of Charleston Auctions to buy and sell used industrial equipment - www.charlestonauctions.com

ON-LINE BIDDING INSTRUCTIONS

- TO PARTICIPATE, YOU MUST:**
1. Type in www.bidspotter.com (make sure nothing is after .com)
 2. Find auction in upcoming auctions and click on sign up for this auction
 3. Left Side – click on New to bidspotter.com and then click on Register
 4. Fill out bidder registration
 5. Exit out and re-enter on www.bidspotter.com
 6. Click on Sign-up and then Sign In (already a bidspotter user)
 7. Utilize User Name & Password emailed to you after registering
 8. Exit out again and re-enter www.bidspotter.com
 9. Click on Bid Now
 10. START BIDDING!
 11. Bid with Bid Now Button for faster bidding

ALL ON-LINE BIDS ARE SUBJECT TO A 15% BUYER'S PREMIUM, CASH OR CHECK. 18% BUYERS PREMIUM IF PAID BY MASTERCARD OR VISA

IMPORTANT INFORMATION

SALE LOCATION: 2701 Dwenger Avenue, Fort Wayne, IN 46803

DATE & TIME: The Auction will begin promptly at 10:00 AM (EST) on Wednesday, October 3rd.

PREVIEW INSPECTION: The items will be available for advance inspection from 9:00 AM - 5:00 PM (EST) on Tuesday, October 2nd.

TERMS OF SALE: A 12% Buyer's Premium will be charged on all purchases. A 15% Buyers' Premium will be charged if using

MasterCard or Visa. For On-Line Auction Terms, please visit bidspotter.com. All bidders must register and provide proper identification. All items are sold "as is, where is" and must be paid for IN FULL, in CASH OR CHECK, accompanied by A LETTER FROM THE PAYOR'S BANK GUARANTEEING UNQUALIFIED PAYMENT TO CHARLESTON AUCTIONS for this sale.

BUYERS: Buyers are responsible for all risk of loss, property damage, personal injury caused by removal, and all costs of removal of items/lots purchased. A certificate of insurance reflecting adequate insurance coverage, holding Auctioneers, owners and landlords harmless against any damage must be furnished to the Auctioneer at Auctioneer's sole discretion and request prior to such removal. Buyer's obligations with regard to removal further include the obligation to repair and restore any damage to the real property or permanent improvements where the purchased items/lots are located. Buyers de-installing items/lots purchased MUST be or use professional, experienced, qualified de-installers and provide to Charleston Auctions a certificate of insurance or bond in an amount of no less than One Million (\$1,000,000) Dollars, prior to performing such work.

REMOVAL: No items will be removed without proof of payment. Sale day removal from conclusion of sale until 5 PM. **Removal times will be from 9:00 AM to 5:00 PM Local Time on October 4th & 5th.** Lots not paid for and/or removed within the time allowed may be resold at public or private sale without further notice, and any deficiency, together with all expenses and charge of resale, will be charged to the defaulting purchaser. Your stamped paid receipt must be shown to checkout supervision prior to removal. **Although checkout supervision will be provided, the auction company and sellers are not liable for lost or stolen items purchased at the sale.**

NOTE: While all information contained in this brochure and other advertising has been obtained from sources deemed reliable, neither the auction company, seller nor publisher shall be liable for any errors or for the correctness of descriptions. All purchases are made "as is, where is" based entirely on the personal inspection and/or opinion of the purchaser and without warranty or guarantee of any kind. Statements made sale day take precedence over printed matter.

Charleston Auctions Reserves the right to reschedule due to inclement weather.