

INDUSTRIAL REAL ESTATE



1404 WHITE STREET, STURGIS, MI
ST. JOSEPH COUNTY

BUILDING DESCRIPTION:

Total Floor Area: 3,840 sq. ft.
Year Built: 1957
Foundation: Concrete slab
Ceiling Height: 9'
Heating: GFA/Space Heaters
Grade Level (Overhead) Doors: 2

SITE DESCRIPTION:

Zoning: Light Industrial
Drainage: Adequate
Topography: Level
Acreage: .200 acres
Access: Public road

FOR ADDITIONAL INFORMATION AND TERMS & CONDITIONS
VISIT OUR WEBSITE WWW.CHARLESTONAUCTIONS.COM

REAL ESTATE
SELLING AT
12:00 NOON

First Class Mail
U.S. POSTAGE
PAID
Fort Wayne, IN
Permit No.
650



433 Council Dr., Fort Wayne, Indiana 46825

Auction

HARTMAN TOOL & DIE

1404 White Street • Sturgis, MI 49091

THURSDAY, MAY 24TH
Beginning @ 12:00 P.M. (NOON)

Preview Inspection:

Thursday, May 24th
8:00 AM - 12:00 PM (Noon)



Charleston Auctions
"International Industrial Auction Services"

Auctioneers: Robert Charleston AU01042047
Chad Olson AU10400029 • Adam Olson AU10700009
433 Council Drive, Fort Wayne, Indiana 46825

E-mail us: info@charlestonauctions.com
or visit our website at www.charlestonauctions.com
1-260-373-0850 Fax: 1-260-373-0854
Toll Free: 877-301-9344



INDUSTRIAL REAL ESTATE & ASSETS
Auction

BID LIVE
ONLINE AT
bidspotter.com

HARTMAN
TOOL & DIE

Sale Location: 1404 White Street
Sturgis, MI 49091

THURSDAY, MAY 24TH • 12:00 P.M.

Preview Inspection: Thursday, May 24th • 8:00 a.m. - 12:00 p.m.



SUPERMAX VERTICAL
MILLING MACHINE



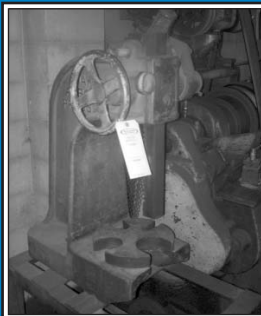
CLAUSING NORDIC 15 LATHE



KENT HYDRAULIC SURFACE
GRINDER



(1 OF 2) POWERMATIC DRILL PRESSES



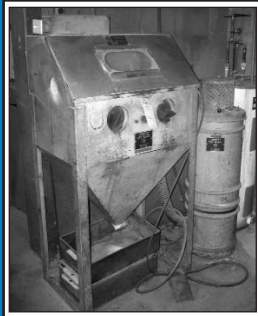
DAKE ARBOR PRESS



GROB VERTICAL BAND SAW



POWERMATIC BELT & DISC SANDER



TRINCO DRY BLAST CABINET



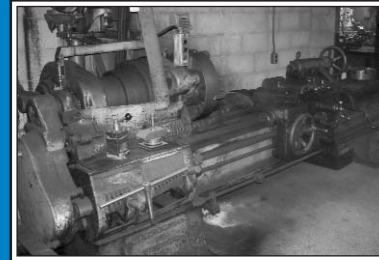
VERNIER UNIVERSAL MILLING MACHINE



CLAUSING COLCHESTER LATHE



DAREX ENDMILL SHARPENER



GREAVE LATHE



K.O. LEE TOOL CUTTER GRINDER



DRIVING DIRECTIONS:

(From Indiana)

North on I-69 toward Lansing, merge onto I80 W / I90 W, Indiana Toll Road Via Exit 156. Take IN-9 Exit, Exit 121 Toward Howe/Lagrange. Turn Left Onto IN-9, IN-9 Becomes MI-66, Turn Right Onto W South Street, Turn Right onto White Street, 1404 White Street.

FOLLOW AUCTION SIGNS!



WORTHINGTON 5 HP AIR COMPRESSOR



40 & 50 TAPER TOOLING



VARIOUS MACHINE TOOLING



VARIOUS PERISHABLE TOOLING

GRINDING & BUFFING EQUIPMENT:

1995 KENT Hydraulic Surface Grinder, Model KGS-250AH, 8" x 18" Magnetic Chuck, S/N 95085204
2001 DAREX End Mill Sharpener, Model E-90, w/Tooling, S/N 94872F
K.O. LEE Tool Cutter Grinder, 1/2 HP
POWERMATIC 12" Disc/6" Belt Sander, Model 30, S/N 280270

PLANT SERVICING EQUIPMENT:

WORTHINGTON Horizontal Air Compressor, Model 5T-2, 5 HP, 2-Stage, S/N AD1971
Various Shelving, Fans, Workbenches, Cabinets, Material & Die Carts, Shop Stools, Etc.

MISCELLANEOUS EQUIPMENT:

DAKE Arbor Press, Model 3
TRINCO Dry Blast System, Model 30, w/Dust Collector, S/N 9721

QUALITY CONTROL EQUIPMENT:

Various Calipers, Surface Plates, Micrometers, Indicator Stands, Height Gages, V-Blocks & Sine Blocks, Parallels, Levels

OFFICE EQUIPMENT:

Various Desks, Storage Cabinets, Tables, Typewriters, Fire Files, 2 & 4-Drawer File Cabinets, Drafting Table, CANON PC850 Copier

SALE LOCATION: 1404 White Street, Sturgis, MI 49091 **DATE & TIME:** The Auction will begin promptly at 12:00 P.M. (Noon) Local Time on Thursday, May 24th, 2007. The doors will open at 8:00 A.M. auction day for final inspection and bidder registration. **PREVIEW INSPECTION:** The items will be available for advance inspection from 8:00 a.m. – 12:00 p.m. Local Time on Thursday, May 24th, 2007. **TERMS OF SALE:** A 10% Buyer's Premium will be charged on all purchases if paid by Cash Or Check. 13% if paid by MasterCard or VISA. All bidders must register and provide proper identification. All items are sold "as is, where is" and must be paid for IN FULL on sale day in CASH, CHECK OR MASTERCARD OR VISA, accompanied by A LETTER FROM THE PAYOR'S BANK GUARANTEEING QUALIFIED PAYMENT TO CHARLESTON AUCTIONS for this sale. **REMOVAL:** All rigging and moving companies must show proof of insurance. No items will be removed without proof of payment. Removal times will be at the conclusion of the sale until 5:00 P.M. & on May 25th & 26th from 9:00 A.M. – 5:00 P.M. Local Time. **THERE IS NO RIGHT TO ABANDONMENT OF ANY ITEMS.** If additional time is needed, please contact the auction company to schedule an appointment. Lots not paid for and/or removed within the time allowed may be resold at public or private sale without further notice, and any deficiency, together with all expenses and charge of resale, will be charged to the defaulting purchaser. Your stamped paid receipt must be shown to checkout supervision prior to removal. Although checkout supervision will be provided, the auction company and sellers are not liable for lost or stolen items purchased at the sale. **NOTE:** All information contained in this brochure and other advertising has been obtained from sources deemed reliable, neither the auction company, seller nor publisher shall be liable for any errors or for the correctness of descriptions. All purchases are made "as is, where is" based entirely on the personal inspection and/or opinion of the purchaser and without warranty or guarantee of any kind. Statements made sale day take precedence over printed matter. **Some items subject to pre-sale.**

MILLING & DRILLING EQUIPMENT:

1995 SUPERMAX Vertical Milling Machine, Model YC-1-5VS, 9" x 42" T-Slot Table, Power Feed, 60 - 4,200 RPM, 3 HP, 3-Phase, S/N F505176
MARENA Vertical Milling Machine, 9" x 42" T-Slot Table, 2 HP, Trak DRO, S/N 3525
(2) POWERMATIC Variable Speed Drilling Machines, Model 1200, (1) w/ Tapping Head, 24" x 40" Table Size, S/N's 7920V024 & 120V151
AMERICAN TOOL WORKS Drill Press, Belt Driven, 18" Round Table
VERNIER Universal Milling Machine, 12" x 60" T-Slot Table, Trak DRO, Universal Head
GOULD & EBERHARDT Horizontal Shaper, 28" Industrial
Various Perishable Tooling (I.E. Drills, Carbide, End Mills, Reamers, Counter Bores, Cutters, Taps & Dies, Etc.)
Various Machine Tooling (I.E. Machine Vises, Indexers, Rotary Tables, Jacobs Chucks, Etc.)

LATHES:

SOUTHBEND 'Nordic 15' Lathe, 15" Swing, 36" BTC, Standard & Metric, 2" Spindle Hole, w/Tooling
CLAUSING COLCHESTER Lathe, Model 15, 15" Swing, 36" BTC, 2" Spindle Hole, w/Tooling, S/N FA49081
GREAVES Engine Lathe, 24" Swing, 80" BTC, 2" Spindle Hole, Belt Driven
Various Lathe Tooling (I.E. Steady Rests, Face Plates, 3-4 Jaw Chucks, Arbors, Tool Post Holders)

SAWS:

GROB Vertical Band Saw, Model N518, 24" x 24" Tilt Table, 18" Throat, Blade Welder, S/N 8774
WELLSAW Horizontal Band Saw, Model 1000, 1 HP, 1,725 RPM, 3-Phase, S/N 3652



VERNIER UNIVERSAL MILLING MACHINE



1995 KENT HYDRAULIC SURFACE GRINDER



K.O. LEE TOOL CUTTER GRINDER