

AUCTION

**REAL ESTATE
TO SELL @
12:00 NOON**



Medical CNC Machining Plant Closing:

C.O.R.E. Tech, Inc.

542 East 200 North Street, Warsaw, IN 46850

TUESDAY, JUNE 19th • BEGINNING AT 10:00 AM EST



(1 OF 3) STAR AUTOMATIC
CNC LATHES



MAZAK SUPER QT250M
CNC LATHE



MAZAK INTEG REX200-2SY
CNC LATHE



MAZAK VTC-16B
VERTICAL MACHINING
CENTER



2001 SODICK
WIRE EDM



2006

MAZAK QT NEXUS 250MSY
CNC LATHE



Charleston Auctions
"International Industrial Auction Services"

Sale Location: 542 East 200 North Street, Warsaw, Indiana 46850

Tuesday, June 19th • Beginning at 10:00 AM EST

Preview Inspection: Monday, June 18th • 9:00 a.m. - 5:00 p.m. EST

Live Internet Bidding
BidSpotter.com[®]
www.bidspotter.com
to register

Auctioneers: Robert Charleston AU01042047, Chad Olson AU10400029
Adam Olson AU10700007, Company AC68900001

433 Council Drive, Fort Wayne, Indiana 46825

1-260-373-0850 • 1-877-301-9344

Fax: 1-260-373-0850

www.charlestonauctions.com • E-Mail: info@charlestonauctions.com





MAZAK VQC-1540 CNC VERTICAL MACHINING CENTER



HARDINGE CNC SUPER PRECISION LATHE



MAZAK VTC-20B CNC VERTICAL MACHINING CENTER



HARDINGE CNC SUPER PRECISION LATHE



CLAUSING COLCHESTER 'STORM' CNC LATHE



OKUMA MC-3VA CNC VERTICAL MACHINING CENTER



SMW SPACESAVER 2200 BAR FEEDER



MIYANO TSV-35 CNC VERTICAL MACHINING CENTER



OKAMOTO SURFACE GRINDER



1994 CHARMILLES 310 ROBOFIL WIRE EDM



1995 CHARMILLES 300 ROBOFIL WIRE EDM

CNC EQUIPMENT:

2006 MAZAK 'Quick Turn Nexus 250 MSY' CNC Lathe, Model QTN-250MSY, w/Chuck – B210A815D, Max. RPM 4,000, w/MAZATROL 640 T Nexus Controls, JORGENSEN Chip Conveyor, Horizontal Turning Center, Live Tooling, S/N 180599

2002 MAZAK 'INTERGREX 200-II SY' CNC Lathe, Model 'INTERGREX 200-2SY', w/Chuck-B-208A615, Max. Speed 5,000 M-1, w/MAZATROL 640 MT PC-Fusion-CNC Controls, TSUBAKI Chip Conveyor, S/N 161205

2000 MAZAK 'Super Quick Turn 250M' CNC Lathe, Model SQT-250M, w/Horizontal Turning Center, Chuck-B-210A615, Max. RPM 4,000, w/MAZATROL 640T PC-Fusion-CNC Controls, Live Tooling, S/N 146636

2000 MAZAK CNC Vertical Machining Center, Model VQC-15/40, w/MAZATROL CAM M-2 Controls, S/N 65827

(3) HAAS 4th Axis Indexing Heads

1996 MAZAK CNC Vertical Milling Machine, Model VTC-16B, w/MAZATROL M32B Controls, 24 Position Tool Changer, Travels X=44", Y=16", Z=20", S/N 117615

1995 MAZAK CNC Vertical Milling Machine, Model VTC-16B, w/MAZATROL M32B Controls, 24 Position Tool Changer, Travels X=44", Y=16", Z=20", S/N 114934

2003 STAR CNC Automatic Lathe, Model SH-12, w/FANUC 'Series 21-T Controls, Spago Turnamic 123 Bar Feeder, S/N 070908

(2) STAR CNC Automatic Lathes, Model KJR-25, w/YASNAC Controls & SMW Omnibar FSQ Bar Feeder, S/N's 000358 & 000361

1995 MAZAK Vertical Machining Center, Model VTC-20B, w/MAZATROL M32B Controls, 24 Position Tool Changer, 4-Axis, Travels X=44", Y=16", Z=20", Spindle 7.5 HP, S/N 114323

1996 CLAUSING COLCHESTER 'Storm' CNC 100 Lathe, Model 'Tornado 100', w/GE FANUC O-T Controls, Live Tooling, 12 Position Tool Changer, w/SPEGO Turnamic 66 Bar Feeder, 6,000 RPM Spindle, 10 HP, S/N C10396

HARDINGE 'Super Precision' CNC Lathe, Model CHNC4, 18" Swing, 36" BTC, w/GN6 Series Controls, S/N CNC-1836-A2-16

(2) 1997 HARDINGE 'Super Precision' CNC Lathes, Model CHNCIII SP, w/GE FANUC Series 18-T Controls, HARDINGE Har-Matic Seven 51 Retractable Bar Feed System, S/N's C3-225-SP & C3-289-SP

OKUMA CNC Vertical Machining Center, Model MC-3VA, w/HAAS Indexer, Model HA5C, S/N 507831, 16-Position Tool Changer, 14" x 36" T-Slot Table, OKUMA OSP500M-G Controls, Travels X=20", Y=13", Z=16", S/N 0056

MIYANO 'Mectron TSV-35' Vertical Machining Center, Model TSV35, 4-Axis, w/(2) HAAS Collet Indexers, 12-Position Tool Changer, FANUC Series O-M Controls, Travels X=20", Y=13", Z=16", Total 20 HP, S/N TSV350356

OKUMA CNC Twin Turret 4-Axis Lathe, Model LC-10, w/OKUMA OSP5000L Controls, S/N 5709-1116

Various SMV Bar Feeders

Huge Qty. Of Certified Medical & Aerospace Grade Tool Steel (Certs Available)

Join Our Mail List to Receive Early Notification of Upcoming Auctions and Liquidations!



VARIOUS HAAS INDEXERS



ROSEMONT VIBRATORY POLISHER



MAZAK VTC 20B CNC VERTICAL MACHINING CENTER



(2) STAR KJR-25 AUTOMATIC LATHES



(13) VARIOUS POLISHING LATHES



2003 STAR SH-12 CNC LATHE



IMPORTANT INFORMATION

SALE LOCATION: 542 East 200 North Street, Warsaw, IN 46580

DATE & TIME: The Auction will begin promptly at 10:00 AM (EST) on Tuesday, June 19th.

PREVIEW INSPECTION: The items will be available for advance inspection from 9:00 AM - 5:00 PM (EST) on Monday, June 18th.

TERMS OF SALE: A 12% Buyer's Premium will be charged on all purchases. A 15% Buyers' Premium will be charged if using MasterCard or Visa. For On-Line Auction Terms, please visit bidspotter.com. All bidders must register and provide proper identification. All items are sold "as is, where is" and must be paid for IN FULL, in CASH OR CHECK, accompanied by A LETTER FROM THE PAYOR'S BANK GUARANTEEING UNQUALIFIED PAYMENT TO CHARLESTON AUCTIONS for this sale. There will be a \$30.00 return check fee charged on all returned checks.

REMOVAL: No items will be removed without proof of payment. Sale day removal from conclusion of sale until 6 PM. **Removal times will be from 9:00 AM to 5:00 PM Local Time on June 20th, 21st & 22nd.** Lots not paid for and/or removed within the time allowed may be resold at public or private sale without further notice, and any deficiency, together with all expenses and charge of resale, will be charged to the defaulting purchaser. Your stamped paid receipt must be shown to checkout supervision prior to removal. **Although checkout supervision will be provided, the auction company and sellers are not liable for lost or stolen items purchased at the sale.**

NOTE: While all information contained in this brochure and other advertising has been obtained from sources deemed reliable, neither the auction company, seller nor publisher shall be liable for any errors or for the correctness of descriptions. All purchases are made "as is, where is" based entirely on the personal inspection and/or opinion of the purchaser and without warranty or guarantee of any kind. Statements made sale day take precedence over printed matter. **Some items subject to presale.**

ELECTRICAL DISCHARGE MACHINES:

2001 SODICK Wire Electrical Discharge Machine, Model AQ325L, w/SODICK LN1W Controls w/Pendant, S/N 1060

1995 CHARMILLES 300 Wire Electrical Discharge Machine, Model 'Robofil', 3/380/60, 18 Amp, 30,715 Hours, S/N 310023

1994 CHARMILLES 310 Wire Electrical Discharge Machine, Model 'Robofil', 3/380/60, 18 Amp, 30,000 Hours, S/N 4.2122

1988 HITACHI Wire Electrical Discharge Machine, Model H-CUT304P, w/FANUC SP230 Controls, Oilmatic Automatic Oil Temp Regulator, EBBCO Cartridge Filter, S/N D315348002

LATHES:

VICTOR Engine Lathe, Model 1630, 16" Swing, 30" BTC, Speed Chuck, 3-Phase, S/N 451165

HARDINGE 'Super Precision' Second Operation Lathe, Model HC, 3-Phase, 1 1/2 HP, Dovetail Bed

(6) HARDINGE Speed Lathes, Model HSL-59, 3-Phase

MILLING & DRILLING MACHINES:

BRIDGEPORT Vertical Milling Machine, Model 'Series I', 2 HP, Bridgeport Power Feed & DRO, 9" x 42" T-Slot Table, S/N 196897

1988 WEBB Vertical Milling Machine, Model 3VK, 3 HP, Servo Power Feed, Anilam Mini-Wizard DRO, S/N 77111

BRIDGEPORT Vertical Milling Machine, 1 1/2 HP, Servo Power Feed, Anilam Mini-Wizard DRO, 9" x 42" T-Slot Table, S/N 166065

RB-I Vertical Milling Machine, Model LC-50RS, 9" x 42" T-Slot Table, 2 HP, FUTABA DRO, S/N 78010183

ROCKWELL 2-Head Gang Drill, Model 15-097, 24" x 48" Table Size, S/N GU521167A85

ON-LINE BIDDING INSTRUCTIONS

TO PARTICIPATE, YOU MUST:

1. Type in www.bidspotter.com (make sure nothing is after .com)
2. Find auction in upcoming auctions and click on sign up for this auction
3. Left Side -- click on New to bidspotter.com and then click on Register
4. Fill out bidder registration
5. Exit out and re-enter on www.bidspotter.com
6. Click on Sign-up and then Sign In (already a bidspotter user)
7. Utilize User Name & Password emailed to you after registering
8. Exit out again and re-enter www.bidspotter.com
9. Click on Bid Now
10. START BIDDING!
11. Bid with Bid Now Button for faster bidding

ALL ON-LINE BIDS ARE SUBJECT TO A 15% BUYER'S PREMIUM, CASH OR CHECK. 18% BUYERS PREMIUM IF PAID BY MASTERCARD OR VISA

Live Internet Bidding



www.bidspotter.com
to register

LIVE INTERNET BIDDING!!! Register online at www.bidspotter.com



2000 HYSTER 8,000 LB. FORK TRUCK, MODEL E-80-XL, SIDE SHIFT, 3-STAGE, LOW HRS.



2000 HYSTER 5,000 LB. FORK TRUCK, MODEL E-50-XM, SIDE SHIFT, 3-STAGE, LOW HRS.



2000 HYSTER 4,500 LB. FORK TRUCK, MODEL E-45-XM, SIDE SHIFT, 3-STAGE, LOW HRS.



(2 OF 3) VARIOUS VERTICAL MILLING MACHINES

GRINDING & BUFFING MACHINES:

SUNNEN Precision Honing Machine, Model MBB-1690, S/N 80532

(2) BOYAR-SCHULTZ Hand Feed Surface Grinder, Model HR612 'Challenger', 6" x 12" Magnetic Chuck, S/N 29999-HR & N/A

(13) Various HAMMOND, RELIABLE, HOMMEDIU, DEVINE Polishing Lathes

EMPIRE Pro-Finish Blast Cabinet w/Dust Collector, Model PF-2636, S/N 0569, Dust Collector Model # DCM-80A, S/N C-21986

ZERO-PEEN Blast Cabinet, Model BNP-50-2, S/N 17181

(2) COMCO INC. 'Micro Blaster' Soda Blast Cabinets, Model MB220, S/N's 1040 & 1504

ROSEMONT Vibratory Polisher, Model PF8-25, Single Phase, w/Lg. Qty. Of Various Media, S/N 2171

(Over 10) Various Pedestal, Bench & Carbide Grinders

(Over 10) Various Disc & Belt Sanders

K.O. LEE Tool Cutter Grinder, Model B923A, 1/2 HP, S/N PF

TORIT Dust Collector, Model 64, 3 PH, 3/4 HP, S/N 220017

Lg. Qty. Of Various Abrasives (I.E. Diamond & Finishing Wheels, Disc, 1" - 6" Belts (New & Used)

SAWING EQUIPMENT:

(2006) HYD-MECH CNC Horizontal Band Saw, Model HSV-250, 5 HP, Automatic Feed, w/E150 Controls, S/N H51204082

DO ALL 36" Vertical Band Saw, Model 3612-H, 36" Throat, Built-In Blade Welder, 24" x 30" T-Slot Tilt Table, 3-Phase, 175" Max. Blade Length, 174" Max. File Length, S/N 272-72260

WELDING:

MILLER 330A/BP CC AC/DC Arc Welder, 22 KVA, 200/230/400 Volt, 110/96/48 Amps, 18 KW, S/N JE780429

Live Internet Bidding



www.bidspotter.com
to register



OMTEC 2007
3rd Annual
Orthopaedic Manufacturing & Technology
Exposition and Conference
June 20-21, 2007 — Rosemont, Illinois

Need More Information?
Contact Alison Miller at 440-247-9051 or via e-mail to
alison@orthoworld.com



HYD-MECH CNC BAND SAW



DO ALL 36" VERTICAL BAND SAW



BRIDGEPORT VERTICAL MILLING MACHINE

Join Our Mail List to Receive Early Notification of Upcoming Auctions and Liquidations!

INDUSTRIAL REAL ESTATE SELLING AT 12:00 NOON EST

Warsaw, IN—Kosciusko County • Real Estate Selling at 12:00 Noon (EST)

Property Inspection: By Appointment

Appraised Value:
\$580,000

BUILDING SIZE & LOCATION:

Total Building Area.....22, 296 Sq. Ft.
Building NameCORE TECH, INC.
Street Address.....542 E. 200 N.
City/StateWarsaw, IN
CountyKosciusko
Township.....Plain

GENERAL DATA:

Number of Stories.....1
Ceiling Height.....16'
Condition.....Excellent
Year Built.....1978
Former UseCNC Medical Machining
Annual Taxes.....\$5,100.00

MECHANICAL DATA:

Sprinklers.....Yes
Heat: Office.....GFA
Mfg. / Warehouse.....GFA
Lighting.....Fluorescent & Metal Halide
Rest Rooms: Office.....3
Production Area.....3

SITE DATA:

Site Acreage.....4.6 Acres
Zoning.....I-2, Light Industrial
Drainage.....Adequate

LOADING FACILITIES:

Dock Height Doors.....1
Grade Level Doors.....2

UTILITIES AVAILABLE:

Electricity SourceKosciusko County REMC
Natural Gas SourceNIPSCO
City WaterIndiana-American Water Co.



Thinking of Selling your Real Estate?

Consider the auction method!

Call a Charleston representative today for a confidential meeting.



COMPANY
LICENSE:
AC68900001

www.charlestonauctions.com



ATLAS COPCO 25 HP ROTARY SCREW AIR COMPRESSOR W/ DRYER



1996 OGP INC. 20" OPTICAL COMPARATOR



HARDINGE SECOND OPERATION LATHE



J & L 30" OPTICAL COMPARATOR

MACHINE TOOLING & EQUIPMENT:

Various CNC Machine Tooling (I.E. HAAS Index Heads, CAT 40 Tool Holders, Carbide Tool Holders

Huge Qty. Of Machine Tooling (I.E. Machine Vises, Indexers, 3 & 4-Jaw Chucks, Speed Chucks, Radius, Dressers, JACOBS Chucks, Arbors & Centers

Huge Qty. Of High End, Perishable Tooling (I.E. Key Cutters, Endmills, Jobbers, Reamers, Carbide Drills, Counter Sinks, Inserts, Ball Mills, Corner Rounds, Chamfer Tooling, Spot Drills, Center Drills, High Speed Center Drills, Boring Bars, Etc.)

QUALITY CONTROL EQUIPMENT:

2002 JONES & LAMSON 30" Optical Comparator, Model FC-30, w/QUADRA-CHEK 100 Controls, S/N E-22827

1996 OGP INC. 20" Optical Comparator, Model 'Top Bench', Single Phase, S/N TB08061411

SCHERR TUMICO INDUSTRIES 20" Optical Comparator, Model 20-3700, w/QUADRA-CHEK 200 DRO, S/N Y-052402

JONES & LAMSON 30" Optical Comparator, w/Quadra-Chek II DRO, S/N E-42404

Huge Qty. Of Quality Control Inspection Equipment (I.E. STARRETT Pink Granite Surface Plates, Height Gages, Pocket Surf II, Micrometers, Calipers, Ring & Plug Gages, Gage Blocks, Pin Gages, Etc.) **FAR TOO MUCH TO LIST!**

MISCELLANEOUS EQUIPMENT:

2005 MHC 48" Metal Pan & Box Brake, Model 4816, 16 Ga., S/N 050-9077-85

RED ARROW 850 H-Frame Shop Press, 40 Ton Capacity, S/N U-29167L

RITE-TEMP Liquid Chiller Unit, Model RTS-503-AWL, 3-Phase, R-22 Refrigerant, S/N 508984536

SCHMIDT Marking Machine, Model 25, S/N 6764

VAPOR ENGINEERING Degreasing Unit

PLANT SERVICING EQUIPMENT:

125' Of SQUARE D I-Line Buss Duct, 600 Amp, 208 Volt, 3-Phase

1996 ATLAS COPCO Rotary Screw Air Compressor, Model GA18, 25 HP, w/Air Receiver Tank & Built-In Air Dryer, S/N AII221894

WHEELHORSE Riding Lawn Tractor, Model GT-1100, Transaxle, 8-Speed, 12 HP KOHLER Engine, 48" Deck

Lg. Qty. Of Roll Around Workbenches, LISTA Hardware/Tooling Storage Cabinets, 2-Door Storage Cabinets, Steel Stock Stands, Shop Stools, Fatigue Mats, Floor Fans

MATERIAL HANDLING EQUIPMENT:

2000 HYSTER 8,000 Lb. Fork Lift, Model E-80-XL, Side Shift, 3-Stage, Low Hrs.

2003 HYSTER 5,000 Lb. Fork Lift, Model E-50-XM, Side Shift, 3-Stage, Low Hrs.

2003 HYSTER 5,000 Lb. Fork Lift, Model E-50-XM, Side Shift, 3-Stage, Low Hrs.

2001 HYSTER 4,500 Lb. Fork Lift, Model E-45-XM, Side Shift, 3-Stage, Low Hrs.

2000 MINI-PACK-TORRE Skin Packer, Model 'Replay 55', Single Phase, S/N MF01BE33

(4) 36 Volt Battery Chargers

ALLIS CHALMERS LP Fork Truck, Model ACC-50L, 5,000 Lb. Capacity, 106" Lift Height, Non-Marking Tires, 2-Stage, S/N 17302389

OFFICE EQUIPMENT & FURNISHINGS:

DELL 'Pentium 4' Workstation PWS5340, 2.00 GHZ Processor Speed, 1.00 MB Ram, Visual Manufacturing, Metacut Utilities, MasterCam 9.1, MasterCam X2, 19" Flat Panel Monitor

DELL 'Pentium 4' Workstation Precision 380, 3 GHZ Processor Speed, 1 GB Ram, MasterCam X2, Auto Desk Inventor 10, 19" Flat Panel Monitor

DELL 'Pentium 4' Precision 340 Workstation, MasterCam X2, 19" Flat Panel Monitor

DELL 'Pentium 4' Workstation PW5360, CD Rom, 17" Flat Panel Monitor, 2.80 GHZ Processor Speed, 1 MB Ram

DELL 'Pentium 4' Workstation PW5340, 2.00 GHZ Processor Speed, 1MB Ram, 17" IBM Flat Panel Monitor

DELL 'Pentium 4 - Optiplex 170L' Workstation, 3 GHZ Processor Speed, 512 MB Ram, 17" Flat Panel Monitor

NCS Computer, AMD Athlon Processor, 1.2 GHZ Processor Speed, 224 MB Ram, 17" DELL Flat Panel Monitor



J & L OPTICAL COMPARATOR



SCHERR TUMICO INDUSTRIES 20" OPTICAL COMPARATOR

Live Internet Bidding

BidSpotter.com[®]

www.bidspotter.com
to register



Join Our Mail List to Receive Early Notification of Upcoming Auctions and Liquidations!



HUGE QTY. OF INSPECTION EQUIPMENT



2000 MINI RACK TORRE SKINPACKER



LG. QTY. LISTA CABINETS



LG. QTY. OF VARIOUS DELL COMPUTERS



HP DESIGN JET 6000 ENGINEERING COPIER



LG. QTY. OF VARIOUS DELL COMPUTERS W/ FLAT PANELS



VARIOUS OFFICE FURNITURE



(OVER 100) CNC CAT 40 TOOL HOLDERS

OFFICE EQUIPMENT & FURNISHINGS (Continued):

HEWLETT PACKARD DesignJet 6000 Engineering Copier, Model C7770B, S/N SG34S5200F

XEROX 2510 Engineering Copier

CANON 'Image Runner 2230' Copier, S/N KJC00833

BROTHER 'Intellifax 2800' Laser Plain Paper Fax

HEWLETT PACKARD LaserJet 4050TN Printer

Lg. Qty. Of "Like New" Office Equipment & Furnishings (I.E. STEELCASE Dbl. Pedestal Desks, Executive Chairs, Conference Table & Chairs, Executive Wood Desk Sets, Floor Mats, Bookshelves, Waiting Area Furniture, Artwork, Office Supplies, Tracing Cabinets, Etc.)

Know of a Potential Auction?

Charleston Auction Pays Outstanding Referral Commissions.

Contact a Charleston representative today.



HIGH END EXECUTIVE FURNITURE



HUGE QTY. OF MEDICAL GRADE & AEROSPACE TOOL STEEL W/ CERTS

DIRECTIONS:

FROM FORT WAYNE INTERNATIONAL AIRPORT:

Start at FWA, Fort Wayne (gate access required). Turn left on W. Ferguson Road. Turn Right on Airport Drive. Turn left on Airport Express Way. Continue on Lower Huntington Road. Turn right to take ramp onto I-69 North. Take exit #109B/US-30/Elkhart/US-33 onto IN-30 W(US-30 West) toward Columbia City. Continue to follow US-30 West. Turn right on E 200 N, Warsaw, on the left (542 E 200 N, Warsaw, IN. **Look for Auction Signs!**)

HOTELS:

DAYS INN WARSAW

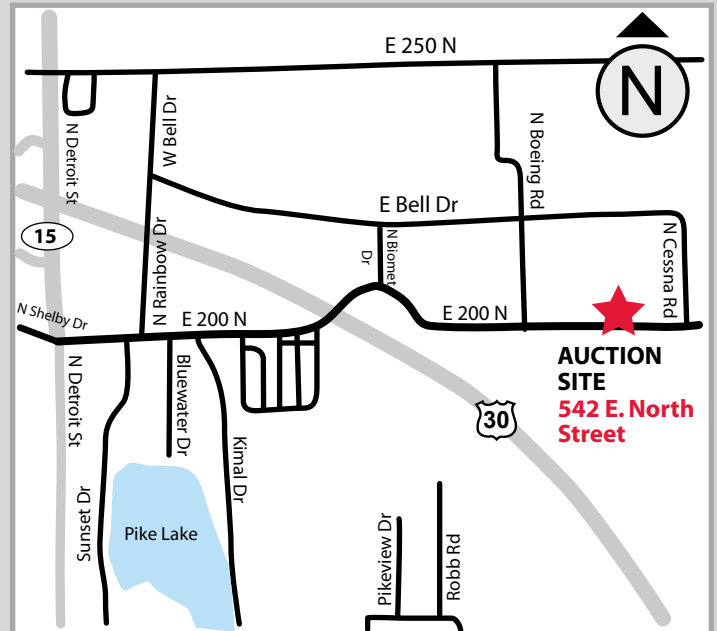
2575 E Center St
Warsaw, IN 46580
800-671-9207

HOLIDAY INN EXPRESS HOTEL & SUITES

3825 Lake City Hwy
Warsaw, IN 46580
574-268-1600

COMFORT INN & SUITES

3328 E Center St Ext
Warsaw, IN 46580
800-671-9207





433 Council Drive, Fort Wayne, Indiana 46825

Medical CNC Machining Plant Closing:

C.O.R.E. Tech, Inc.

Sale Location: 542 E. 200 N. St. Warsaw, IN 46580

TUESDAY, June 19th - Beginning at 10 AM (EST)

Preview Inspection: Monday, June 18th
9:00 AM-5:00 PM (EST)

THINKING OF SELLING YOUR INDUSTRIAL ASSETS?
Call a Charleston representative today for a confidential meeting.
877-301-9344

FIRST CLASS
U.S. POSTAGE
PAID
FORT WAYNE, IN
PERMIT #1420

JUNE						
SUN	MON	TUE	WED	THU	FRI	SAT
					1	2
3	4	5	6	7	8	9
10	11	12	13	14	15	16
17	18	19	20	21	22	23
24	25	26	27	28	29	30



WWW.CHARLESTONAUCTIONS.COM

AUCTION



Medical CNC Machining Plant Closing:

C.O.R.E. Tech, Inc.

542 East 200 North Street, Warsaw, IN 46850

Tuesday, June 19th - BEGINNING at 10:00 AM

ROLLING STOCK:

2003 Nissan Murano, leather, loaded, 85,000 miles

2002 CHEVROLET 'Venture' Mini Van, Air, Dual Air Bag, Power Locks, Rear Wiper, 99,937 Mileage, Vin. No. 1GNDU23E22D164345

1994 FORD EXPLORER, Push Button 4 x 4, 6-Cylinder 4.0 Liter, Air, Cruise, Leather, 116,225 Mileage, Vin. No. 1FMDU34X6RUD94944



2002 CHEVY VENTURE
MINI VAN



2003 NISSAN MURANO



1995 FORD EXPLORER

Live Internet Bidding

BidSpotter.com[®]

www.bidspotter.com
to register