

AUCTION



Facility Closing:
KARL SCHMIDT

2425 COLISEUM BLVD. FORT WAYNE, IN 46803

WEDNESDAY, JAN. 20TH – BEGINNING @ 10:00 AM LOCAL TIME

Preview Inspection: Tuesday, Jan. 19th 9:00 a.m. - 5:00 p.m.



(1 OF 2) OKUMA LU15 HORIZONTAL CNC MACHING CENTERS



(1 OF 3) TAKISAWA HORIZONTAL TWIN SPINDLE CNC MACHING CENTER

FINAL AUCTION
OVER 1,000 LOTS



1994 BAIRD 2000 SPECTROVAC

Live Internet Bidding

BidSpotter.com[®]

www.charlestonauctions.com
to register



(1 OF 2) KITAMURA MC 3X VERTICAL MACHING CENTERS

Charleston Auctions
"International Industrial Auction Services"



Auctioneers: Chad Olson, Adam Olson
Indiana Company License # AC68900001

260-373-0850 • Toll Free 877-357-8124 • Fax 260-373-0854

E-mail: info@charlestonauctions.com • **Website:** www.charlestonauctions.com





NEW CHICAGO 18 1-4 BLOWER



SODA BLASTING SYSTEM



LH PIC: (1 of 5) VARIOUS OPTICAL COMPERITOR
RH PIC: (1 of 2) KITAMURA MC 3X VMC



(OVER 50) PLASTIC AND STEEL DUMP HOPPERS



VARIOUS PUMPS



(OVER 10) VARIOUS DUMP TABLES



VARIOUS FORK TRUCK BOOM ATTACHMENTS



Visit our website:
www.charlestonauctions.com
for upcoming auctions and to
visit our marketplace.

CHARLESTON MARKETPLACE



KENT-OWENS 1-14 PRODUCTION
MILL 9x32 TABLE

WWW.CHARLESTONEQUIPMENTMARKET.COM

CHARLESTON AUCTIONS ONLINE MARKETPLACE

Our on-line marketplace is rapidly becoming the hottest spot to buy and sell used industrial equipment. Major manufacturers such as General Electric and Regal Beloit are uploading equipment daily.

Don't miss this opportunity to buy at auction prices.



OSI 68738 BELT DRIVEN OVEN

PREVIEW: TUESDAY, JAN. 19TH - 9:00 AM - 5:00 PM LOCAL TIME

CNC MACHINING CENTERS

(2) OKUMA Horizontal Twin Spindle CNC Machining Center
Model-LU15
SN-1435, 1564
3 Phase
OKUMA OSP-U100L Controls

(2) KITAMURA My Center – 3X VMC
Model- MC 3X
SN-12026, 12028
FANUL Series 161-M Controls
10,000 RPM Spindle
30 Positions Tool Changer

(2) TAKISAWA Twin Spindle CNC Horizontal Machining Center
Model-TPS-5000
SN-TNBT9005, TNBT9007
FANUC Series 160-T Controls

Complete Cellular Concepts Production Cell
Model-H15
SN-R05D-55-99
W/ FANUC Series 21-M Controls

2000 CUDA Parts Washer
Model-1021
SN-1002540
RP List: 139, 3 PH

INSPECTIONS & QUALITY EQUIPMENT

1994 BAIRD Spectrovac 2000
Model-N/A
SN-N/A
1 Meter Focal Length, 60 Channel Element Capacity

ADCOLE Inspection Gage
Model-911-24
SN-7597
1 PH/120V/16A/60HZ
WT 96 KG

Complete MAHR Federal Inspection System
WILSON/ROCKWELL Hardness Tester Series 500
Model-B524-R
SN-83378911
Digital Read-Out

OGP XL-14C Optical Comparitor
Pi-Metric Z Axis DRO
SN-XL140569

BUEHLER 10-1000 Cutter
Model-10-1000-260
SN-330-A-1643
3 Phase

UNIMET Unitron Microscope
Model-8623
SN-Bi20-1092

BUEHLER Pneumet II Mounting Press
Model-20-1495-115
SN-461-BM2-1063

Huge Qty. of Inspection Equipment Consisting of:
Misc, Calipers, Gages, Surface Plates, Height Gages, Pin & Block Gages
FAR TOO MUCH TO LIST

MATERIAL HANDLING/PLANT SERVICING EQUIPMENT

JLG Scissor Lift
Model-1932E
SN-0200037256
Extendable Platform
500 Lb Capacity

HANDY HERMAN Electric Man Lift
Model-24D
SN-7501217
12 Volt, 300 Lb Capacity

ADVANCE Riding Electric Floor Scrubber
Model-Adressor 2820D
SN-1837740
Type E, 36 Volt

KARCHER 16 HP Hot Water Pressure Washer
Model-HDS3205BE
16 HP V-Twin VANGARD Engine

MACHINE SHOP EQUIPMENT

BRIDGEPORT Vertical Milling Machine
1 HP, Column Riser, Anilam DRO
SN-148248

LEBLOND Lathe
17" Swing, 40" BTC
Anilam Wizard 211 DRO
Phase II Tool Post Holder

CRAFTSMAN 20" Industrial Drill Press
5/8" Chuck, 12 Speed
150-4200 RPM
2 HP, 18" X 18" Adj. Table

Huge Qty of Hand Tools, Power Tools, Work Benches, Welding Tables, Hardware Cabinets w/ Controls, Material Carts, Storage Cabinets, Floor & Barrel Fans, Shop Desks & Office Equipment, Step & Extension Ladders, Safety Equipment, Tool Boxes & Chests, GREENLEE Equipment, Bench Vises, Hoists & Jibs, KNAAK & JOB Boxes, Clamps, Rigging Equipment, SOMETHING FOR EVERYONE

MISCELLANEOUS

WISCONSIN Oven
Model-SB-432
SN-082950210
Max Temp: 650 Degrees F
Input/HR: 24 KW
Voltage: 480/3/60
Amps: 33

2002 JBI Spray Booth
Booth Type: Dry
Model-TDB-67-S
SN-40445

BLAST ALL Blast Cabinet
Model-3636-7 PDC
SN-961125452

1993 PAC-PRESS Sludge Press
Model-P630E132A-3R-2PP
SN-365
Filter: PMU630FG3
Max Pressure: 100 PSI
Cu Ft Capacity: 3.0
Surface Area: 65.0

1989 TREE City 4 Way Saw
SN-1691
Down Acting

Scrap Package Available
Call for Info or to Set Up an Appointment

Over 20 Various Digital Platform Scales



2000 CUDA PARTS WASHER



COMPLETE CELLULAR CONCEPTS PRODUCTION CELL



LATE MODEL MAHR FEDERAL INSPECTION CELL



OKUMA LU15 HORIZONTAL TWIN SPINDLE CNC MACHINING CENTER



LH PIC: ADCOLE INSPECTION GAGE MODEL 911-24
RH PIC: KITAMURA MC 3X VERTICAL MACHINING CTR.



WILSON ROCKWELL HARDNESS TESTER SERIES 500

SALE: WEDNESDAY, JAN. 20TH - BEGINNING @ 10 AM LOCAL TIME



ADVANCE FLOOR SCRUBBER



KARCHER HOT WATER PRESSURE WASHER



LEBLONDE ENGINE LATHE



LEFT PIC: (1 OF 2) AUTOMATED ROBOT CASTING CELLS COMPLETE
RIGHT PIC: 1989 TREE CITY 4 WAY CUT OFF SAW



LEFT PIC: BRIDGEPORT VERTICAL MILLING MACHINE
RIGHT PIC: BUEHLER 10-1000 CUTTER



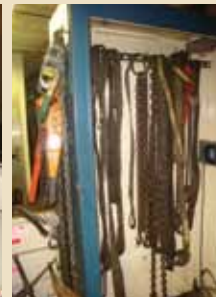
LEFT PIC: BUEHLER II MOUNTING PRESS
RIGHT PIC: HANDY HERMAN TELESCOPING MAN LIFT



LEFT PIC: JLG 1932E SCISSOR LIFT
RIGHT PIC: OPG 14 INCH OPTICAL COMPERITOR



LEFT PIC: UNIMET UNITRON MICROSCOPE
RIGHT PIC: VARIOUS RIGGING EQUIPMENT



HUGE QTY OF LIKE NEW STORAGE CABINETS



WISCONSIN DBL OVEN

IMPORTANT INFORMATION

PLEASE NOTE: OUR BIDDER PAYMENT TERMS AND CONDITIONS HAVE CHANGED. PLEASE VIEW OUR WEBSITE FOR DETAILS!

SALE LOCATION: 2425 Coliseum Blvd. Fort Wayne, IN 46803

DATE & TIME: The Auction will begin promptly at 10:00 a.m. (Local) on Wednesday, January 20th. Preview Inspection: The items will be available for advance inspection from 9:00 a.m. - 5:00 p.m. (Local) on Tuesday, January 19th.

TERMS OF SALE: For on-site buyers a 12% Buyer's Premium will be charged on all purchases. A 15% Buyers' Premium will be charged if using a credit card. Charleston Auctions is now accepting all major credit cards. For On-Line Auction Terms, please visit bids-potter.com. All bidders must register and provide proper identification. All items are sold "as is, where is" and must be paid for IN FULL, in CASH, CHECK, OR CREDIT CARD accompanied by A LETTER FROM THE PAYOR'S BANK GUARANTEEING UNQUALIFIED PAYMENT TO CHARLESTON AUCTIONS for this sale.

REMOVAL: All rigging and moving companies must be pre-approved prior to sale day. No items will be removed without proof of payment. Sale day removal from conclusion of sale until 6 PM. **Removal Dates & Time:** Removal will be held for (2) hours following the conclusion of the sale or until 6:00 pm on January 20th.

Thursday, Jan. 21st through Saturday, Jan. 23rd from 8:00 am - 6:00 pm Daily and Monday, Jan. 25th through Friday, Jan. 29th from 8:00 am - 6:00 pm Daily Lots not paid for and/or removed within the time allowed may be resold at public or private sale without further notice, and any deficiency, together with all expenses and charge of resale, will be charged to the defaulting purchaser. Your stamped paid receipt must be shown to checkout supervision prior to removal. **Although checkout supervision will be provided, the auction company and sellers are not liable for lost or stolen items purchased at the sale.**

DISCLAIMER AND ABSENCE OF WARRANTIES: Each potential Bidder is responsible to conduct, at their own risk and cost, their own independent inspections, investigations, inquiries, and due diligence concerning the property. Seller and Charleston, or Charleston's agents and associates, are not responsible for any warranty as to condition of property. Bidder shall be fully responsible for confirming that each item bid on is appropriate for Bidder's intended use. Neither Charleston nor Seller shall be responsible, in any way, for confirming or denying the specific identity or intended use of any item or piece of property. Inspection dates have been scheduled and will be staffed with auction personnel. Please feel free to inspect the property at any other time, so long as arranged in advance with Charleston. Bidder shall repair any damage to the Property done by Bidder, its representatives and agents, while conducting any Inspections. In addition, Bidder shall indemnify, defend and hold Seller harmless for any claims or damages suffered by Seller relating to actions taken by Bidder, its representatives and agents, while conducting any Inspections.

The property is being sold on AS IS, WHERE IS basis, and no warranty or representation, either express or implied, concerning the property is made by the Seller or the Auction Company. The information contained in this brochure is subject to verification by all parties relying on it. No liability for its accuracy, errors or omissions is assumed by the Sellers or the Auction Company.

GOVERNING LAW: Bidder agrees that no matter what State or Country Bidder resides, or location of the auction, all disputes or disagreements shall be construed according to the laws of the State of Indiana. Charleston Auctions Reserves the right to reschedule due to inclement weather. Items Subject to Presale.

SALE: WEDNESDAY, JAN. 20TH - BEGINNING @ 10 AM LOCAL TIME

PREVIEW: TUESDAY, JAN. 19TH - 9:00 AM - 5:00 PM



(2) ROTARY SCISSOR LIFT TABLES



(20) SECTIONS OF VARIOUS PALLET RACKING



ENERPAC 20 TON GEAR PULLER



LH PIC: 2001 ABB IRB1400 ROBOT

RH PIC: BROWN & SHARP #13 UNIVERSAL TOOL GRINDER



LH PIC: COMPLETE 10 STATION ROBOTIC PALLETIZER

RH PIC: DAKE H FRAME SHOP PRESS.



LH PIC: (OVER 50) STEEL WIRE BASKETS & TUBS

RH PIC: VARIOUS CONVEYOR



(1 OF 2) COMPLETE WASTE WATER TREATMENT SYSTEMS



CLARK 8,000 LB. LP FORK TRUCK



GENIE ELECTRIC BOOM LIFT



LH PIC: CINCINNATI MILACRON MODEL MT MONOSET CUTTER TOOL GRINDER

RH PIC: CLARK 3,000 LB. LP FORK TRUCK



LH PIC: DISPLAY ENGINE

RH PIC: GORBEL 1,000 LB. CAPACITY JIB



LH PIC: VARIOUS JOB & GANG BOXES

RH PIC: VARIOUS PLASTIC STORAGE TANKS



10' PAN BRAKE



COMPLETE WASTE WATER TREATMENT SYSTEM



HUGE QTY. OF HAND TOOLS



433 Council Drive, Fort Wayne, IN 46825

Facility Closing: **KARL SCHMIDT**

Sale Location: 2425 Coliseum Blvd.
Fort Wayne, IN 46803

Sale Date & Time: Wednesday, Jan. 20th,
Beginning at 10:00 am Local Time

Preview Inspection: Tuesday, Jan. 19th,
from 9:00 am to 5:00 pm Local Time

JANUARY						
SUN	MON	TUE	WED	THU	FRI	SAT
					1	2
3	4	5	6	7	8	9
10	11	12	13	14	15	16
17	18	19	20	21	22	23
24/31	25	26	27	28	29	30

CV

www.charlestonvaluation.com

Charleston Valuation

LEADERS IN THE APPRAISAL OF INDUSTRIAL MACHINERY

We have the largest comparable sales data warehouse in the business. Over 30 years, Charleston has collected data regarding domestic and international sales of machinery and equipment.

FIRST CLASS
U.S. POSTAGE
PAID
FORT WAYNE, IN
PERMIT #1420

WWW.CHARLESTONAUCTIONS.COM

AUCTION

Facility Closing: **KARL SCHMIDT**

2425 Coliseum Blvd., Fort Wayne, IN 46803



Sale Date & Time: Wednesday, Jan. 20th,
Beginning at 10:00 am Local Time

Preview Inspection: Tuesday, Jan. 19th,
from 9:00 am to 5:00 pm Local Time

KSIA



COMPLETE BLAST SYSTEM



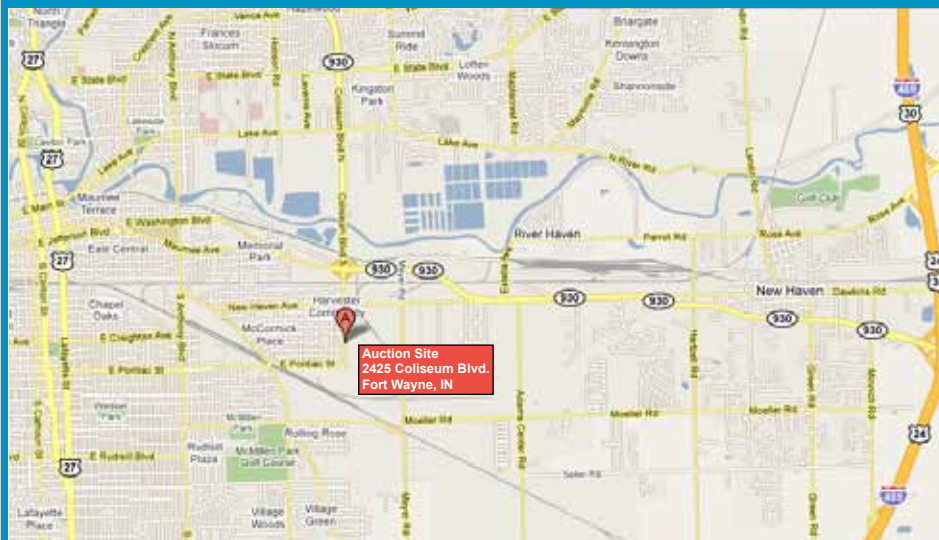
HUGE QTY OF VARIOUS INSPECTION EQUIPMENT



JBI PAINTBOOTH

PLAN NOW TO ATTEND

MAP



DRIVING DIRECTIONS

From the Fort Wayne Int'l. Airport:
3801 W. Ferguson Rd., Fort Wayne, IN 46809
(260) 747-4146

1. Head East on W. Ferguson Rd. toward 10th St. (.09 mi.)
2. Take the 3rd left onto Bluffton Rd. (1.0 mi.)
3. Take the 3rd right onto Airport Expy/Baer Field Thruway (2.5 mi.)
4. Continue onto W. Paulding Rd. (0.6 mi.)
5. Turn left at Lafayette St. (2.0 mi.)
6. Turn right at E. Pontiac St. (1.7 mi.)
7. At the traffic circle, take the 3rd exit onto Pioneer St. (469 ft.)
8. At the traffic circle, take the 1st exit onto E. Pontiac St. (0.6 mi.)
9. Turn left at Coliseum Blvd. S.

Destination will be on the right (0.2 mi.) 2425 Coliseum Blvd. S.
- WATCH FOR AUCTION SIGNS!

HOLIDAY INN
at IPFW and the Coliseum
4111 Paul Shaffer Dr.
Fort Wayne, IN (260) 482-3800