

**INDUSTRIAL
AUCTION**

AUCTION

TWO COMPANIES • ONE GREAT AUCTION!

Assets No Longer Needed For The Continuing Operations Of:
PLASTIC PROCESSORS, INC. & KEY PLASTICS, INC.

PLASTIC PROCESSORS, INC.



(2) of (4) Hydraulic
Mold Presses



BOLLING Rubber Mill



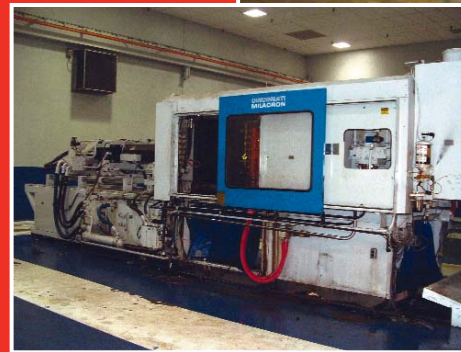
CNC BRIDGEPORT
Vertical Milling Machine



KEY PLASTICS



1998 BATTENFIELD
Plastic Injection
Machine



(1) of Several CINCINNATI Milacron
Plastic Injection Molding Machines

JAPAX Wire Electrical
Discharge Machine



Sale Location: 7450 S. Homestead Drive, Hamilton, IN • **WEDNESDAY, JUNE 21TH** • 10 A.M.

Preview Inspection: Tuesday, June 20th • 9:00 A.M. - 5:00 P.M.



Auctioneers: Robert Charleston AU01042047, Chad Olson AU10400029
and Brandon Steffen AU19600168 Company AC68900001
433 Council Drive, Fort Wayne, IN 46825
260-373-0850 • Toll Free: 1-877-301-9344
FAX: 1-260-373-0854

E-mail us at info@charlestonauctions.com or visit our

LIVE INTERNET BIDDING • Visit www.bidspotter.com for registration website at: www.charlestonauctions.com



COMPLETE GAS FIRE BOILER



SCOTCHMAN IRONWORKER



WABASH LAB PRESS



(1) OF (4) HYDRAULIC MOLD PRESSES

IMPORTANT INFORMATION:

SALE LOCATION: 7450 S. Homestead Drive, Hamilton, IN
DATE & TIME: The Auction will begin promptly at 10:00 A.M. EST on Wednesday, June 21, 2006.
PREVIEW INSPECTION: The items will be available for advance inspection from 9:00 A.M. - 5:00 P.M. (EST) on Tuesday, June 20, 2006.

ITEMS SUBJECT TO PRESALE.
TERMS OF SALE: A 10% Buyer's Premium will be charged on all purchases. A 13% Buyers' Premium will be charged if using Mastercard or Visa. For On-Line Auction Terms, please visit bidspotter.com. All bidders must register and provide proper identification. All items are sold "as is, where is" and must be paid for IN FULL, in CASH OR CHECK accompanied by A LETTER FROM THE PAYOR'S BANK GUARANTEEING UNQUALIFIED PAYMENT TO CHARLESTON AUCTIONS for this sale.

REMOVAL: All rigging and moving companies must show proof of insurance. No items will be removed without proof of payment. *Removal times will be from the conclusion of sale until 6:00 P.M. and from 9:00 A.M.-5:00 P.M.(EST) on Thursday, June 22 & Friday, June 23.* Lots not paid for and/or removed within the time allowed may be resold at public or private sale without further notice, and any deficiency, together with all expenses and charge of resale, will be charged to the defaulting purchaser. Your stamped paid receipt must be shown to checkout supervision prior to removal. Although checkout supervision will be provided, the auction company and sellers are not liable for lost or stolen items purchased at the sale.

NOTE: While all information contained in this brochure and other advertising has been obtained from sources deemed reliable, neither the auction company, seller nor publisher shall be liable for any errors or for the correctness of descriptions. All purchases are made "as is, where is" based entirely on the personal inspection and/or opinion of the purchaser and without warranty or guarantee of any kind. Statements made sale day take precedence over printed matter. **Charleston Auctions reserves the right to reschedule the sale due to inclement weather.**

RUBBER & RUBBER SUPPORT EQUIPMENT:

- BOLLING Rubber Mill, 100 HP, 480 Volt, 22" x 60" Capacity, On A Unitized Base, Electric Plugging Brake, 3-Phase, Lubemaster System
- BOLLING Rubber Lab Mill, 8" x 22"
- 5' Diameter x 7' Long Autoclave, 150 PSI
- 18 x 48 Rubber Mill

PRESS & PRESS RELATED EQUIPMENT:

- TMP 4-Post Upacting Molding Press, 44" x 38" x 34", 2400 PSI Capacity, 30" Ram, Electric Platens
- (2) TMP 4-Post Upacting Molding Presses, 35 PSI, 30" Ram, 30" x 30" x 28"
- (5) Various Knockouts & Accessories
- (2) TMP 4-Post Molding Presses, 21 x 22 x 16, 12" Ram, 2000 PSI
- DENNISON Multi-Press, 8-Ton, Hydraulic
- (3) Various 20 - 60 Ton Hydraulic Jack Presses

CONVEYOR/PLANT SERVICING:

- 1971 SUPERIOR Boiler, Fire Tube, Gas Fired, 150 PSI
- WHEELHORSE Yard Tractor
- Sm. Qty. Of Various Incline & Transfer Conveyor (I.E. Power, Skate, Belt & Roller)
- (3) Various Overhead Crane Systems, 500 Lb. - 1 Ton Capacity

OVENS:

- Electric Oven, 500° F Max. Temp., 24" x 20" x 20"
- BLUE-M Lab Oven, 500° F Max. Temp., 4' x 4' x 28"
- DISPATCH Lab Oven, 500° F Max. Temp., 4' x 4' x 28"

CNC & METALWORKING EQUIPMENT:

QUALITY CONTROL EQUIPMENT

- Lg. Qty. QC Equipment (i.e., Calipers, Heightgages, Micrometers, Pin and Gage Block Sets, Hole Mics, Go/No Go Gages, etc).
- BRIDGEPORT CNC Vertical Mill, w/"NEW" Anilam Controller & (3) "NEW" Servo Motors
- SCOTCHMAN Ironworker, 70 Ton, Punch, Shear & Brake, w/Tooling
- BRIDGEPORT Vertical Knee Mill, 1 HP, 9" x 42" Table Size

QUALITY CONTROL & INSPECTION EQUIPMENT:

- WABASH Lab Press, 4-Post, Heated Platens, 30 Ton Upacting, 6" Compression Stroke, Model 30-12-2T, Electric Controls, 12" x 12" Platen, S/N 4036
- 1998 ROCKWELL Hardness Tester, Model HR150A, S/N 0344

MATERIAL HANDLING EQUIPMENT:

- YALE 5,000 Lb. Capacity Fork Lift, 2-Stage, LP Gas, Hard Tire, R.O.P.S.

DRIVING DIRECTIONS FROM FORT WAYNE:

Take I-69 N to Exit 140 Ashley/Hamilton East Follow Approx. 10 Miles (Left) to Homestead Drive

WATCH FOR AUCTION SIGNS!

NOTE: EQUIPMENT SUBJECT TO PRESALE.



LIVE INTERNET BIDDING
Visit www.bidspotter.com for registration



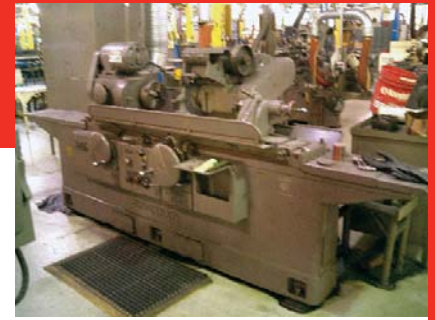
BRIDGEPORT VERTICAL MILL



CARDBOARD BALER



VARIOUS CONAIR GRANULATORS



CINCINNATI ID/OD GRINDER

PLASTIC INJECTION PRESSES & PRESS RELATED

- 1998 BATTENFELD Horizontal Plastic Injection Press, Model – BA10000/7700 HM, Hydraulic Press 1520L/192bar, with EMC 2001 Eagle Pendant Control, Capacity 650mm-1125mm
- CINCINNATI Milacron Horizontal Plastic Injection Press, Model VH 500-41, S/N 3905A21189-13
- (2) CINCINNATI Milacron Horizontal Plastic Injection Press, Model VH 400-29, (1) has Flexible Automation Robot System, S/N 3904AZ1189-7
- CINCINNATI Milacron Horizontal Plastic Injection Press, Model VH 290-11 • (6) Various 1991 CONAIR Granulators, Model LP350, 3-15 HP

ELECTRICAL DISCHARGE MACHINE

- 1991 JAPAX Wire Electrical Discharge Machine, Model LDM 50L, S/N EE03A

METAL WORKING EQUIPMENT/PLANT SERVICING

- BRIDGEPORT Vertical Knee Mill, 9" x 49" Tablesize, 1 HP, S/N -NA
- THERMOCYCLER Dust Collector
- Cardboard Bailer
- Various Dump Hoppers, Cabinets, Workbenches, Pan Shelving, Pallet Racking, Ladders, Lockers
- GARDNER Denver Rotary Screw Air Compressor, Complete with Air Dryer and Chiller Systems
- Complete Water Treatment Facility
- TOLEDO Digital Platform Scale
- (3) Banding Carts, Complete with Ratchets and Crimp Tools

MATERIAL HANDLING

- CATERPILLAR Forklift, Model T120, 12,000 LB Capacity, LP Gas, R.O.P.S., 2 Stage, Hardtire
- (3) Baker 3 Wheel Electric, Zero Radius Forklifts, Hardtire
- HYSTER 10,000 Lb. Electric Fork Lift, 48 Volt, 2-Stage, Hydrostatic, 136" Lift Height w/48 Volt Charger
- 2000 YALE 6000 Lb. Electric Fork Lift, 36 Volt, Hydraulic Forks
- 1995 CLARK 5,000 Lb. Electric Fork Lift, 36 Volt, Triple Mast
- 1997 KOMATSU 4,000 Lb. Fork Lift, LP Gas, 2-Speed Transmission
- Automatic Battery Changing Station, w/ 2-Ton Capacity Jib Crane & Hoist System

OFFICE

- Lg. Qty. Various Office Equipment (i.e., Desks, Tables, 2 & 4-Drawer Filing Cabinets, 2 Drawer Storage Cabinets, Book Shelves, Swivel Chairs, etc).

GRINDING EQUIPMENT

- K.O. LEE Hydraulic O/D Grinder, Model MBB 1290D
- HEALD I/D Grinder, No. 75-A, 5 HP
- KBC Surface Grinder, Model LF618, w/ENCO 6" x 18" Magnetic Chuck

SAWS

- WELLSAW Horizontal Band Saw, Model 1016, 2 HP, 3-Phase
- KALAMAZOO Horizontal Band Saw, Model H9AW

WELDING EQUIPMENT

- AIRCO 300 Amp AC/DC Heliwelder II

LATHES

- SOUTH BEND NORDIC 15 Lathe, 2" Spindle Hole, 15" Swing, 48" BTC, Standard & Metric

MISCELLANEOUS EQUIPMENT

- Over 40 Various Scrap Dies
- SUNNEN Hone, Model MBB 1290D



THOMPSON HYDRAULIC SURFACE GRINDER



VARIOUS SURFACE GRINDERS



WELLSAW HORIZONTAL METAL CUTTING BAND SAW



CHEVROLET STAKE BED TRUCK



SMALL QTY. OF Q.C. & LAB EQUIPMENT



DENNISON MULTI PRESS



YALE FORK LIFT



PRSRT
 First Class Mail
 U.S. POSTAGE PAID
 Fort Wayne, IN
 Permit No. #1287

433 Council Drive • Fort Wayne, IN 46825

Assets no longer needed for the
 continuing operations of:
**PLASTIC PROCESSORS, INC.
 & KEY PLASTICS, INC.**

Sale Location: 7450 S. Homestead Drive, Hamilton, IN
 Wednesday, June 21st - 10:00 A.M. EST
 Preview Inspection: Thursday, June, 20th
 9:00 A.M. - 5:00 P.M. EST

JUNE						
SUN	MON	TUE	WED	THU	FRI	SAT
				1	2	3
4	5	6	7	8	9	10
11	12	13	14	15	16	17
18	19	20	21	22	23	24
25	26	27	28	29	30	

WWW.CHARLESTONAUCTIONS.COM

AUCTION

Assets No Longer Needed For The Continuing Operations Of:
PLASTIC PROCESSORS, INC. & KEY PLASTICS, INC.

7450 S. Homestead Drive, Hamilton, IN
WEDNESDAY, JUNE 21st - 10:00 A.M.



1997 KOMATSU 4,000 LB. FORK TRUCK



BidSpotter.com

**LIVE INTERNET
 BIDDING**
 Visit
www.bidspotter.com
 for registration