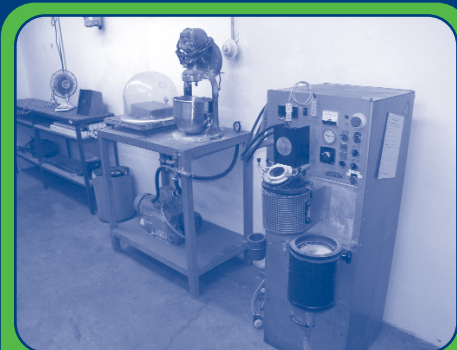




(1 of 4) HYSTER Electric Fork Lifts



COMPLETE Investment Casting System

IMPORTANT INFORMATION:

SALE LOCATION: 1119 North Main Street, Elkhart, Indiana.

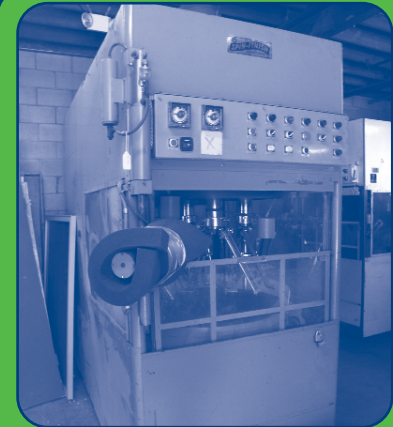
DATE & TIME: The Auction will begin promptly at 10:00 A.M. on Tuesday, September 20th. The doors will open at 8:00 A.M. auction day for final inspection and bidder registration.

PREVIEW INSPECTION: The items will be available for advance inspection from 9:00 A.M. - 5:00 P.M. on Monday, September 19th.

TERMS OF SALE: A 10% Buyer's Premium will be charged on all purchases paid with Cash or Check. 13% if paid by MasterCard or VISA. All bidders must register and provide proper identification. All items are sold "as is, where is" and must be paid for IN FULL on sale day in CASH, CHECK OR ALL MAJOR CREDIT CARDS, accompanied by A LETTER FROM THE PAYOR'S BANK GUARANTEEING UNQUALIFIED PAYMENT TO CHARLESTON AUCTIONS for this sale.

REMOVAL: All rigging and moving companies must show proof of insurance. No items will be removed without proof of payment. Removal times will be at the conclusion of the sale until 5:00 P.M. & on Wednesday, Sept. 21st, Thursday, Sept. 22nd & Friday, Sept. 23rd from 8:00 A.M. - 5:00 P.M. If additional time is needed, please contact the auction company to schedule an appointment. Lots not paid for and/or removed within the time allowed may be resold at public or private sale without further notice, and any deficiency, together with all expenses and charge of resale, will be charged to the defaulting purchaser. Your stamped paid receipt must be shown to checkout supervision prior to removal. Although checkout supervision will be provided, the auction company and sellers are not liable for lost or stolen items purchased at the sale.

NOTE: While all information contained in this brochure and other advertising has been obtained from sources deemed reliable, neither the auction company, seller nor publisher shall be liable for any errors or for the correctness of descriptions. All purchases are made "as is, where is" based entirely on the personal inspection and/or opinion of the purchaser and without warranty or guarantee of any kind. Statements made sale day take precedence over printed matter.



(1 of 3) Spin Finishers



COMPLETE Investment Casting System



VER-TECH Bailer



(1 of 14) Various Fork Lifts

LIVE ONLINE AUCTION!!

Bid Live Online at www.bidspotter.com



REAL ESTATE

REAL ESTATE SELLING AT 6:00 PM

70,000(+) Sq. Ft. Industrial Facility, 4 Acres, Selling in One Tract. Near Proposed Re-Development

Inspect, Arrange Financing, Come Prepared to Bid your Price!



Rare opportunity to purchase a excellent Industrial Facility. This property is in a prime location next to proposed redevelopment. This property would make an excellent condo project, divisible Industrial Rental Space or a prime building for an end user.

Facility Features:

- Number of Stories: 2
- Total Sq. Ft.: 70,000 Sq. Ft. (+)
- Manufacturing Sq. Ft.: Approximately: 65,000 Sq. Ft.
- Office Sq. Ft.: 5,000 Sq. Ft.
- Heating System: Hot Water Boiler
- Electrical: 240/3 Volt and 480/3 Volt Building has 110 Volt Step down Transformer
- Elevator: 3,000lb
- Parking: Ample
- Docks: 4 Depressed Docks 3 Ground level overhead doors

Inspection Dates: Tuesday September 6th from 5-6pm or for a private inspection contact a Steffen Representative at our corporate headquarters 260-426-0633

Visit our website at www.steffengrp.com for terms & conditions and additional information

Mr. Charles Peterson and Mr. Daniel Mockler, Seller
Brandon M. Steffen, Real Estate Auction Manager

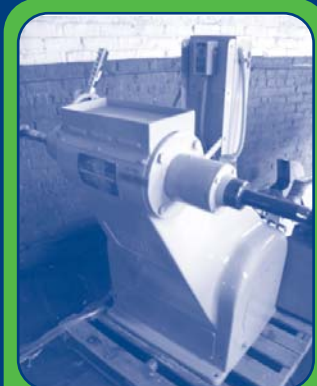
STEFFEN GROUP
A Real Estate and Auction Firm



(1 of 3) Spin Finishers



DOALL Vertical Band Saw



(Over 15) HAMMOND UNITED STATES CO. Buffers



433 Council Drive, Fort Wayne, Indiana 46825

Auction

Former Assets No Longer Needed To The Continuing Operations Of:

CONN-SELMER, INC.

Sale Location: 1119 N. Main Street, Elkhart, IN

Tuesday, Sept. 20th, 10:00 A.M.
Public Inspection: Mon., Sept. 19th, 9:00 AM-5:00 PM

SEPTEMBER

S	M	T	W	T	F	S
				1	2	3
4	5	6	7	8	9	10
11	12	13	14	15	16	17
18	19	20	21	22	23	24
25	26	27	28	29	30	



First Class Mail
U.S. POSTAGE
PAID
Fort Wayne, IN
Permit No. 650

Auction

Former Assets No Longer Needed To The Continuing Operations Of:

CONN-SELMER, INC.

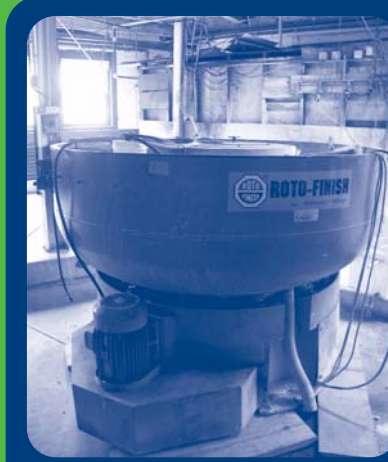
Sale Location: 1119 North Main Street, Elkhart, IN



FEDERAL 22 Ton OBI Punch Press



QUINCY Q350 Rotary Screw Air Compressor



ROTO FINISH Deburring & Polishing System



(1 of 7) Planetary Finishing Systems



CATERPILLAR 10,000 Lb. Fork Lift

TUESDAY • SEPTEMBER 20th • 10:00 AM

Preview Inspection: Monday, September 19th • 9:00 AM-5:00 PM



Auctioneers: Robert Charleston AU01042047
Chad Olson AU10400029 • Company AC68900001
433 Council Drive • Fort Wayne, Indiana 46825

260-373-0850 • Toll Free 877-301-9344
Fax: 1-260-373-0854
www.charlestonauctions.com
E-Mail: info@charlestonauctions.com





1 of Several Various DeCoilers



CLAUSING Dual Head Drill Press



DAKE 50 Ton H-Frame Press



EXCELLO Vertical Milling Machine



CINCINNATI Grinder with Optical Attachment

Call For Detailed Information on Musical Manufacturing Equipment
(260) 373-0850
Toll Free (877) 301-9344

Visit Our Newly Changed Website for Upcoming Auctions!
www.charlestonauctions.com



KO LEE Tool Cutter Grinder

DRIVING DIRECTIONS:

Take 80/90 Indiana Toll Road to Hwy 19 South (Cassopolis Street), Turn Right on E. Briston Street, Turn Left on N. Main Street. Sale Site is at the Corner of N. Main Street and E. Simonton Street.

Follow Auction Signs

THIS IS A LIVE ONLINE AUCTION! Register Today & Bid Live Online at www.bidspotter.com



SUNNEN Hone

PRESSES & PRESS RELATED EQUIPMENT

1988 FEDERAL No. 22 OBI Punch Press, Light Curtains, WINTRISS Load Analyzer, Air Clutch, Palm Button Controls, 2.5" Stroke, 22 Ton Capacity, 8.5" Shut Height, 72" x 20" Bed Space, 7" Throat Depth, 150 SPM, S/N 22-331
L & J No. 27 OBI Punch Press, 27 Ton Capacity, 2.5" Stroke, 2" Adjustment, 21 1/2 x 13, Palm Button Controls, Air Clutch
BLISS No. 24 Knuckle Press, w/Air Clutch, 24" Opening
FEDERAL OBI Press, 22 Ton Capacity, 2" Stroke, 150 SPM, Palm Button Controls, Air Clutch, S/N 2-2509
FEDERAL OBI Press, 32 Ton Capacity, 2.5" Stroke, 125 SPM, Palm Button Controls, Air Clutch, S/N 3-2576
L & J OBI Punch Press, #15, Mechanical Clutch, Palm Button Controls
(2) TOLEDO No. 663 Knuckle Presses, w/Air Clutches , 24" Open, 400 Ton, S/N's 23299 & N/A
WATSON 4-Post Hydraulic Press, 40 Ton Capacity, Up-Acting w/Hydraulic Power Unit
DENNISON Hydroil Multi-Press, Model DK4C01C18A12A59S20, S/N 13478
PDC Automatic Air Press, Model PDC-AT2 1040, S/N 2761-1

Various DURANT & US Tool Decoilers
DAKE 50 Ton H-Frame Press, Model 50H, S/N 177753
UN-D-COIVER, 3,500 Lbs. Max.

MILLING & DRILLING MACHINES

(2) CLAUSING 20 Drill Press Heads, Model 2236, 1 1/2 HP, S/N's 20110819 & 20110820
CLAUSING Drill Press, Model 2223, 23" x 18" Table Size, S/N 109581
POWERMATIC Drill Press, Model 11504, 16" x 16" Table Size, Variable Speed, S/N 715V833
WILTON Drill Press, Model 3570
T-Drill, Model A30SD, INDRAMAT Controller, S/N 34502002
BRIDGEPORT Vertical Knee Mill, 9" x 42" Table Size, 1 HP, S/N 24953
EXCELLO Vertical Knee Mill, 9" x 42" Table Size, 1 1/2 HP, Servo Power Feed, S/N 6022334
VAN NORMAN Mill #12, Model 268, S/N 126443
GORTON Panto Mill, Model P1-3, S/N 43778
BURKE No. 3 Horizontal Milling Machine, Model 126A, S/N 266
Lg. Qty. Of Various BUFFALO, DELTA, ROCKWELL, CRAFTSMAN, ATLAS, JET, CLAUSING, POWERMATIC Drill Presses

LATHES

MONARCH Engine Lathe, Model 12"KK, 14.5" Swing, 30" BTC, Tooled Up, S/N 11930
SUMMIT Gap Bed Lathe, 1 1/2", Metric / English Capacity, 16" Swing, 3" BTC, Tooled Up, S/N 360-1000-3092-2
LOGAN Lathe, Quick Change Gear, Model 1810, 10" Swing, 18" BTC, S/N 32989

GRINDING EQUIPMENT

CINCINNATI Tool Grinder, w/Optical Grinding Attachment, S/N 1D2T1M-947
K.O. LEE Tool Grinder, Model BA900, S/N 7549-5-63
COVEL Tool Grinder, Model 6A, S/N 6A-2649
PARKER MAJESTIC Surface Grinder, No. 2, 6" x 18" Electromagnetic Chuck
WARDWELL Model 57T Automatic Tool Cutter Grinder w/Coolant System
(2) DELTA TOOLMAKER Grinders, Model 'Toolmaker', 5" x 10" Magnetic Chuck, S/N 49-4475
Lg. Qty. Of Various Dbl. Pedestal & Bench Mounted Grinders & Buffers

WELDING EQUIPMENT

Various LINCOLN Arc Welders, Carts & Accessories

MISCELLANEOUS EQUIPMENT

PROMACUT V.A.B.R. Vertical Angle Bending Rolls
SUPERIOR Hone, Model J-2, w/Tooling, S/N 2-5004
SUNNEN PRECISION Honing Machine, Model MBB-1650, Loaded, S/N 52338
GORTON Trace Master, Model 2-30, 7 1/4 HP, S/N 48123
PETERMAUN Automatic Screw Machine, w/Tooling
MILWAUKEE Die Filer, Model FS, Type XSS, S/N 5856
Lg. Qty. Of Support Tooling (I.E. 3-4 Jaw Chucks, Tailstocks, Steady Rests, Index Heads, Radius Dressers, Face Plates)

OVENS

QUINCY Oven, 3-Phase, 800o F Max.
HOSKINS Electric Furnace, Model FR252-20, Max. Temp. 1850o F, 26 KW, 3-Phase, S/N 32473
FOSTORIA IR Oven, Model 75-066, Max. Watts/Heater 1600°, S/N 95306

WOODWORKING EQUIPMENT

DELTA Wood Lathe, Model 46-200, S/N 138-363A
DEWALT Radial Arm Saw, Model GK, S/N 32928
ROCKWELL Scroll Saw, 16" x 16" Table Size, 30" Throat
CRAFTSMAN Radial Arm Saw, 10" Capacity
CRAFTSMAN 12" Table Saw, S/N R024505348
YATES AMERICAN Planner, Model B244

SAWS

DOALL Vertical Band Saw, Model V-36, 36" Throat, 36" x 36" Tilting Table, Blade Welder, S/N 36432788

MATERIAL HANDLING EQUIPMENT

(2) 1999 HYSTER 6,000 Lb. Electric Fork Lifts, Model E-60-XM, 3-Stage w/Side Shift
(2) 2000 CATERPILLAR 5,000 Lb. Fork Lifts, Model GC-25, LP, 3-Stage w/Side Shift
HYSTER 6,000 Lb. Fork Lift, Model H-60-XL, LP, Air Tires

1999 HYSTER 8,000 Lb. Electric Fork Lift, Model E-80-XL, 3-Stage w/Side Shift
1993 CATERPILLAR 10,000 Lb. Fork Lift, Model TC-100S, LP, 3-Stage, w/Side Shift
(2) 1999 TOYOTA 6-Series Fork Lifts, LP, 3-Stage, Hard Tires, w/Side Shift
CLARK 4,000 Lb. Fork Lift, Model C500-45, LP, Hard Tires, Side Shift, S/N 4-1223-2520
ALLIS CHALMERS Fork Lift, Model EE-20-24, 36 Volt, Hard Tire, Electric, S/N 57039000
YALE Electric Fork Lift, Model K58C-020-G36-5071, 36 Volt, 2,000 Lb. Capacity, S/N P-212771
PRESTO Pallet Lift, Model PSTA2127, 2,000 Lb. Capacity, S/N 116912
BIG JOE Die Cart, Model 2018-85, 2,000 Lb. Capacity, Self Contained Charger, S/N 59005
NAMCO Stand-Up Electric Fork Truck, Model SU-2020E, 2,000 Lb. Capacity, 36 Volt, S/N 763164E
(3) Various Pallet Jacks

PLANT SERVICING EQUIPMENT

JOY 50 HP Stationary Water Cooled Air Compressor w/Air Receiver Tank
QUINCY Q-350 Rotary Screw Air Compressor, Auto Dual Control, 75 HP

VER-TECH Bailer, Model M42BC, Down-Acting, S/N 421106BC
INGERSOLL RAND Air Dryer, Model DXR75, S/N 96KDXR5034
INGERSOLL RAND Hydrogard Air Dryer, Model HG400E4, S/N 8944G3089
(4) HAMMOND Dusk Iector, After Filter, Model DK-350-155, 230 Volt, Shaker System, 3-Phase, 60 Cycle, 24 Bag Capacity
DUSTKOP Cyclone Dust Collector
Lg. Qty. Of "Like New" High Capacity TORIT Dust Collectors
Lg. Qty. Of Various Tape Machines, Workbenches, Pallet & Cantilever Racking
Lg. Qty. Of Material Carts, Shop Tools, Chairs, Timeclocks, Safety Ladders, Pan Shelving, Cabinets, Shop Vacs, Floor Fans, Scales
Lg. Qty. Of Fluorescent Lights, Extension Cords, Motors, Regulators, Other Misc. Electrical

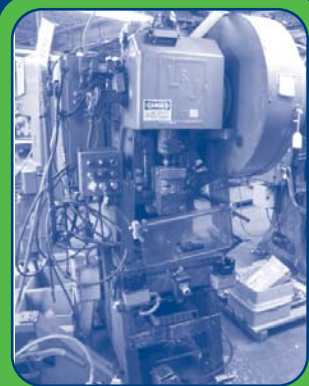
OFFICE EQUIPMENT

CHALLENGE Collator
MOORE 1400 Decollator
CUMMINS Shredders
17' x 25' Modular Office w/(6) Office Spaces
CHALLENGE Paper Cutter, Model HB, Size 265, S/N 13324
Lg. Qty. Of Office Equipment & Furniture (I.E. Desks, Tables, File Cabinets, Lateral Cabinets, 2-Drawer Storage Cabinets, Pan Shelving, Copiers, Fax Machines, Etc.)

FINISHING EQUIPMENT:

(7) 1997 120 CU. FT. Custom Tool Planetary Tumble Polisher, Menzerna Type, Triple Shaft, PLC Micro-Processor Controls -LIKE NEW- Versatile Tumbling Finisher
(1) 120 CU. FT. Custom Tool Planetary Tumble Polisher, Menzerna Type, Triple Shaft, PLC Micro-Processor Controls, Manufactured 1997
(2) GRAVI-FLO Model V3-412 Spin Finish Vertical Polishing Machine, 50 Shaft, w/(4) Vertical Planetary Shafts, 16" Max. Part Dia. 24" Max. Part Length, 50 HP, w/High Pressure Blower, S/N 57130, 57129 & N/A
ROTOFINISH Vibratory Bowl System, Model 2765, S/N ER-2530BC-92-B7
(3) SPIN Finishers, Model V3-412-50, Robotic Feed Arm, 4-Head, S/N's 57129, 57121 & 57130
(2) HAMMOND Cylindrical O.D. Finishers, S/N'S 1405-051992 & N/A
(2) HAMMOND O.D. Cylindrical Finishing Machine w/Auto Doper, Model N/A, S/N 1405-051992
Over (15) HAMMOND UNITED STATES CO. Dbl. Pedestal Buffer Units, Model 3-ROL-B
Lg. Qty. Of Polishing Media
Lg. Qty. Of Finishing Tooling
INVESTMENT CASTING SYSTEM: COMPLETE INVESTMENT CASTING SYSTEM (LOST WAX PROCESS) CONSISTING OF THE FOLLOWING EQUIPMENT:
(1) ERSCHEM Model JV15 Induction/Vacuum Melting & Casting Machine, 8 KVA, .14 MHZ, S/N JV15NR-1205B
(1) YASUI/GESSWEIN Vacuum Wax Injector, 600 Watt, S/N 752A
(1) YASUI/GESSWEIN Auto Clamp, 100 Watt, S/N H3-2205
(1) KERR "PRO-JECTOR" Professional Wax Injector, Model 22213, 500 Watt, S/N 001041
(1) BOSCH Model RA0040-E506-1001 Vacuum Pump w/Chamber, 28 CFM @ .5 TORR, S/N E-30238
(1) THOMAS INDUSTRIES Vacuum Pump
(1) EISINGER Vacuum Chamber
(1) 2 Ga. Oscillating Mixer
(1) Custom Built Curing Furnace, Natural Gas Fired w/Micro Processor Control
(1) Lot of Wax, Molds, Flasks, Crucibles, Compounds, Etc.

AFTERMARKET AUTOMOTIVE, MUSICAL INSTRUMENT & JEWELRY MANUFACTURERS - PLEASE CALL FOR DETAILS!!



L&J OBI Press



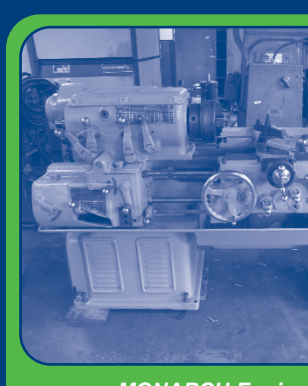
Lg. Qty. of Various Drill Presses



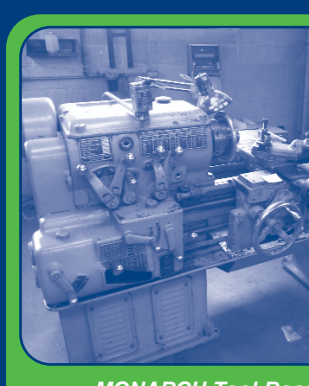
TOLEDO #664 400 Ton Knuckle Press



UN-COILER DeReeler



MONARCH Engine Lathe



MONARCH Tool Room Lathe



SUMMIT Gap Bed Lathe With Tooling



1 of Several Various Ovens



CLAUSING Drill Press



PROMACUT Vertical Angle Bending Rolls



SPIRATRON Vibratory Finishing System