

FIRST CLASS
AUTO
U.S. POSTAGE
PAID
FORT WAYNE, IN
PERMIT #136

STOCK
Building
Supply
ABSOLUTE AUCTION
SURPLUS TO THE NEEDS OF
STOCK BUILDING SUPPLY

Sale Location:
1509 East Main Street, Russellville, AR 72801
Sale Date and Time:
Friday, August 6th & Saturday, August 7th
Beginning at 9 AM (CDT)
Preview Inspection:
Thursday, August 5th 9 AM-5 PM (CDT)

AUGUST						
SUN	MON	TUE	WED	THU	FRI	SAT
1	2	3	4	5	6	7
8	9	10	11	12	13	14
15	16	17	18	19	20	21
22	23	24	25	26	27	28
29	30	31				

ABSOLUTE ONSITE / WEBCAST AUCTION!

AUCTION

STOCK Building Supply 1509 East Main Street, Russellville, AR 72801
Surplus to the Ongoing Needs of STOCK BUILDING SUPPLY
Previous Assets of National Home Centers, Inc. **MASSIVE 2-DAY AUCTION**

FRIDAY, AUGUST 6TH & SATURDAY, AUGUST 7TH AT 9:00 AM (CDT)

PREVIEW INSPECTION: Thursday, August 5th from 9:00 AM - 5:00 PM (CDT)

Day 1 **ABSOLUTE** **Day 2**
Friday, August 6th EVERYTHING MUST SELL REGARDLESS OF PRICE! Saturday, August 7th
AUCTION!



1 OF 3 CRAM-A-LOT
CARDBOARD BAILERS



FAB-TECH ROTARY CARPET
HANDLING SYSTEM



FRONT LOAD WASHER & DRYERS



COMPLETE FURNITURE SHOWROOM



GENESIS 1435E TENNONER



CEDAR, WALNUT, MAHOGANY,
SPANISH CEDAR, POPLAR



NEW SAMSUNG, WHIRPOOL, FRIGIDAIRE,
ELECTROLUX, & KITCHEN AID APPLIANCES



HOME & OFFICE FURNITURE

www.CharlestonAuctions.com

AUCTION

STOCK
Building
Supply

Sale Date and Time: Friday, August 6th & Saturday, August 7th Beginning at 9 AM (CDT)
Preview Inspection: Thursday, August 5th from 9 AM - 5 PM (CDT)

MAP

Sale Location: 1509 East Main Street, Russellville, AR 72801



DRIVING DIRECTIONS

- Directions from Russellville Regional Airport**
1. Start out going N on AIRPORT RD toward S MACON AVE (0.3 m)
 2. Turn LEFT onto AR-980/AIRPORT RD. (0.03 m)
 3. Turn RIGHT onto AR-331/S EL MIRA AVE. (1.0 m)
 4. Turn LEFT onto MAIN ST/E MAIN ST/US-64 (0.6 m)
 5. Auction will be on the RIGHT
- Directions from Little Rock National Airport**
1. Start out going W on AIRPORT RD toward DAVID GRUNDFEST JR DR. (0.6 m)
 2. Turn SLIGHT RIGHT to stay on AIRPORT RD. (0.3 m)
 3. AIRPORT RD becomes ANNIE M BANKHEAD DR (0.2 m)
 4. Merge onto I-440 W toward I-30/DOWNTOWN HOT SPRINGS/TEXARKANA. (2.3 m)
 5. Merge onto I-30 E/US-167 N/US-65 N via EXIT 138A (4.4 m)
 6. Merge onto I-40 W via EXIT 143A on the LEFT (70.2 m)
 7. Take the AR-326/WEIR RD exit, EXIT 83. (0.3 m)
 8. Turn LEFT onto WEIR RD/AR-326. (1.0 m)
 9. Turn RIGHT onto MAIN ST/E MAIN ST/US-64. (0.4 m)
 10. Auction will be on the RIGHT

Watch for Auction Signs!

HOTELS

COMFORT INN & SUITES (479) 968-2424
HAMPTON INN (479) 858-7199
LA QUINTA INN & SUITES (479) 967-2299

CA CHARLESTON
Auctions & Liquidations

Live Internet Bidding
BidSpotter.com



433 Council Drive, Fort Wayne, Indiana 46825
Call: 877-357-8124 • 260-373-0850 • Fax: 260-373-0854
E-mail: info@CharlestonAuctions.com • Website: www.CharlestonAuctions.com

Arkansas
Auctioneer
License
#AR2250

DAY 1: Friday, August 6th at 9AM (CDT)

DAY 1:

- Huge Inventory of New Furniture: Chairs, Bedroom Sets, Kitchen & Bath Cabinets, Tubs
- Millions of Board Feet: Trim, Moulding, Sheet Goods
- Over (1500) Sections of Cantilever Racking, Pallet Racking, Decking, Shelving TOO MUCH TO LIST!
- Huge Qty. Cherry & Walnut Hardwoods
- Windows, Door Slabs, Pre-Hung Doors, Interior & Exterior, Columns, Door Glass Inserts, Bi-Fold Doors THOUSANDS TO CHOOSE FROM!
- MAXUS Vertical Air Compressor 3 HP Single Stage, 1 Phase Model: EX840100AJ S/N: L3/7/07
- 1994 JV CRAM-A-LOT Down-Acting Cardboard Bailer Model: 60DB.L.U. S/N: 4860
- 1991 SV CRAM-A-LOT Down-Acting Cardboard Bailer Model: 60-INT-BD S/N: 3452
- 2005 SV CRAM-A-LOT Down-Acting Cardboard Bailer Model: VB-60-B S/N: VB01988-01
- Huge Qty. DELTA & DEWALT Table Saws, Pressure Washers, Air Compressors, Battery Chargers, Welders, Radial Arm Saws, Fire Extinguishers, Floor Jacks, Paint Sprayers, Step Ladders
- ROL AIR Vertical Air Compressor 7.5 HP Model: V75180K50B-19 S/N: 09020225
- CAROLINA 30 Ton H-Frame Shop Press Model: CP100 S/N: 01368
- HOLMAN Radial Saw
- RUVO Door Machine
- KVAL Commander Door Machine
- KVAL Handler
- RUVO Door Machine
- RUVO 505 Door Machine
- FAB TECH Rotary Carpet Display, 3-Phase Model: 8318 S/N: 831830501
- FAB TECH Rotary Carpet Display, 3-Phase Model: 8318 S/N: 831830502



1 OF 2 KAVL DOOR MACHINES



VARIOUS WATER HEATERS



1 OF 3 MANTITOWIC ICE MACHINES



HARDWOOD



SHINGLES AND ROOFING MATERIAL



I JOIST AND TRUSS JOIST



RUVO STEEL DOOR ROUTER



RUVO TRIAD DOOR MACHINE



PALLETS OF PAINTS & STAINS



MATERIAL CARTS



OVER 25 SAFETY LADDERS



OVER 1500 SECTIONS OF PALLET RACKING



BUNKED TRIM AND MOULDING



CAROLINA 50 TON H-FRAME PRESS



COMPLETE RUVO DOOR MACHINE



KAVL DOOR MACHINE



ROL-AIR VERTICAL AIR COMPRESSOR



ROOFING MATERIALS

DAY 2: Saturday, August 7th at 9AM (CDT)



HIGH END APPLIANCES



STOVES, OVENS AND RANGES



WASHER AND DRYER COMBOS



ARMOURS AND BEDROOM FURNITURE



BEDS AND MATTRESSES



COMPLETE FURNITURE SHOW ROOM



WINE COOLERS, ICEMAKERS, STOVES AND COMPACTORS



OVER 30 FIREPLACE INSERTS

IMPORTANT INFORMATION

SALE LOCATION: 1509 East Main Street, Russellville, AR 72801.
DATE & TIME: Friday, August 6th & Saturday, August 7th beginning at 9 AM each day (CDT)
PREVIEW INSPECTION: Thursday, August 5th 9 AM - 5 PM (CDT)
TERMS OF SALE: A 12% Buyer's Premium will be charged on all purchases. A 15% Buyer's Premium will be charged if using a credit card. Charleston Auctions is now accepting all major credit cards. For online auction terms, please visit Bidspotter.com. All bidders must register and provide proper identification. All items are sold "as is, where is" and must be paid for IN FULL, CASH, CHECK, OR CREDIT CARD accompanied by A LETTER FROM THE PAYOR'S BANK GUARANTEEING UNQUALIFIED PAYMENT TO CHARLESTON AUCTIONS for this sale.
BUYERS: Buyers are responsible for all risk of loss, property damage, personal injury caused by removal, and all costs of removal of items/lots purchased. A certificate of insurance reflecting adequate insurance coverage, holding Auctioneers, owners and landlords harmless against any damage must be furnished to the Auctioneer at Auctioneer's sole discretion and request prior to such removal. Buyer's obligations with regard to removal further include the obligation to repair and restore any damage to the real property or permanent improvements where the purchased items/lots are located. Buyers de-installing items/lots purchased MUST be or use professional, experienced, qualified de-installers and provide to Charleston Auctions a certificate of insurance or bond in an amount of no less than One Million (\$1,000,000) Dollars, prior to performing such work.
REMOVAL: No items will be removed without proof of payment or before the conclusion of the auction. Removal is at the expense, risk and liability of the purchaser.
Removal Dates & Time: August 8th - August 17th from 9AM - 5PM Daily (CDT) **"NO EXCEPTIONS! - NO RIGHT OF ABANDONMENT! \$250 DAILY (PER BUYER) ABSOLUTELY NO ADDITIONAL TIME ... ALL ITEMS MUST BE REMOVED BY 5PM ON AUGUST 17TH. ANY BUYER THAT HAS NOT REMOVED ALL OF THEIR ITEMS WILL BE ASSESSED A \$250 PER DAY PENALTY UNTIL ALL ITEMS HAVE BEEN REMOVED!** Lots not paid for and/or removed within the time allowed may be resold at public or private sale without further notice, and any deficiency, together with all expenses and charge of resale, will be charged to the defaulting purchaser. Your stamped paid receipt must be shown to checkout supervision prior to removal. **Although checkout supervision will be provided, the auction company and sellers are not liable for lost or stolen items purchased at the sale.**
DISCLAIMER AND ABSENCE OF WARRANTIES: Each potential Bidder is responsible to conduct, at their own risk and cost, their own independent inspections, investigations, inquiries, and due diligence concerning the property. Seller and Charleston, or Charleston's agents and associates, are not responsible for any warranty as to condition of property. Bidder shall be fully responsible for confirming that each item bid on is appropriate for Bidder's intended use. Neither Charleston nor Seller shall be responsible, in any way, for confirming or denying the specific identity or intended use of any item or piece of property. Inspection dates have been scheduled and will be staffed with auction personnel. Please feel free to inspect the property at any other time, so long as arranged in advance with Charleston. Bidder shall repair any damage to the Property done by Bidder, its representatives and agents, while conducting any inspections. In addition, Bidder shall indemnify, defend and hold Seller harmless for any claims or damages suffered by Seller relating to actions taken by Bidder, its representatives and agents, while conducting any inspections.
The property is being sold on AS IS, WHERE IS basis, and no warranty or representation, either express or implied, concerning the property is made by the Seller or the Auction Company. The information contained in this brochure is subject to verification by all parties relying on it. No liability for its accuracy, errors or omissions is assumed by the Sellers or the Auction Company.
GOVERNING LAW: Bidder agrees that no matter what State or Country Bidder resides, or location of the auction, all disputes or disagreements shall be construed according to the laws of the State of Indiana.

ONLINE BIDDING INSTRUCTIONS

- TO PARTICIPATE, YOU MUST:
1. Type in www.CharlestonAuctions.com (make sure nothing is after .com)
 2. Click on Bidspotter logo at the bottom of the pertaining auction info
 3. Find auction in upcoming auctions and click on sign up for this auction
 4. Left Side - click on New to bidspotter.com and then click on Register
 5. Fill out bidder registration
 6. Exit out and re-enter on www.bidspotter.com
 7. Click on Sign-up and then Sign In (already a bidspotter user)
 8. Utilize User Name & Password emailed to you after registering
 9. Exit out again and re-enter www.bidspotter.com
 10. Click on Bid Now
 11. START BIDDING!
 12. Bid with Bid Now Button for faster bidding
- ALL ON-LINE BIDS ARE SUBJECT TO A 15% BUYER'S PREMIUM. 18% BUYER'S PREMIUM IF PAID BY CREDIT CARD



OVER 2000 LOTS TO BE SOLD ABSOLUTE!



CHARLESTON Auctions & Liquidations

DAY 2: Saturday, August 7th at 9AM (CDT)

DAY 2:

- Hundreds of Sofas, Couches, Loveseats, Chairs, End Tables
- Dining Chairs, Dining Room Tables, Foot Stools, Coffee Tables
- Book Cases & Shelves, Hutches, Armours, Sofa Tables, Bar Stools NEW AND WRAPPED FOR SHIPPING!
- Kitchen & Bath Cabinets, Complete Sets & Individual Pieces DON'T MISS THIS CHANCE TO UPDATE YOUR HOME OR OFFICE!
- Large Inventory of Hanging Light Fixtures
- Over 30 Various Gas & Wood Fire Place Inserts
- (3) Area Rug Display Units
- Front Load Washer & Dryers, Dishwashers, Air Conditioners, Refrigerators, Freezers, Compactors, Stoves & Ranges, Counter Top Inserts, Overhead Microwaves, Double Ovens, Warming Drawers, Ice Makers...
- Huge Inventory of Wall Décor... Mirrors, Wall Art, Clocks, Lights
- Thousands of Small Décor Items... Vases, Goblets, Statues, Planters, Game Tables, Crystal Trees, Tripods, Stands, Lamps, Lighting FAR TOO MUCH TO LIST!

Visit our website for the catalog and complete auction information
www.CharlestonAuctions.com

STOCK
 Building
 Supply

ABSOLUTE
 EVERYTHING MUST SELL
 REGARDLESS OF PRICE!
AUCTION!



NEW FURNITURE INVENTORY



HUNDREDS OF PIECES OF ARTWORK



HUTCHES AND CABINETS



INTHEBOX APPLIANCES



LAMPS AND LIGHTING



NAME BRAND REFRIGERATORS



DECORATIVE TREES



CUSTOMARTWORK



SOFAS AND CHAIRS



STANDS AND DISPLAYS



ELECTRIC FIREPLACES WITH MANTELS



1 OF 3 AREA RUG DISPLAY SYSTEMS



HOME DECOR



GAME TABLES



HUGE QTY OF IN THE BOX FURNITURE



NEW FURNITURE



HUNDREDS OF CHAIRS

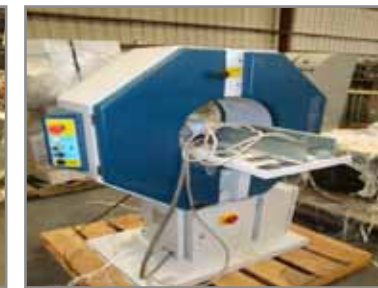


NAME BRAND APPLIANCES

DAY 1: Friday, August 6th at 9AM (CDT)



CHAMPION HORIZONTAL AIR COMPRESSOR



COMPACT BUNDLE WRAPPER



DOOR STRIKE MACHINE



EAGLE VERTICAL AIR COMPRESSOR



LG QTY OF WOODWORKING EQUIPMENT



MILWAUKEE PANEL SAW



OVER 20 PALLET JACKS



RUVO DOOR MITRE SAW



VARIOUS TABLE SAWS



GRIPPER STRIPS



CERAMIC, PORCLINE AND SLATE TILE



LG QTY OF NEW CARPET



TILE AND LAMINATE FLOOR COVERINGS



WOOD AND LAMINATE FLOORING



(2) CRAM-A-LOT CARDBOARD BAILERS



1 OF 3 RUVO DOOR MACHINES



GONDOLA SHELVING



HUGE QTY OF CANTILEVER RACKING



HUGE QTY OF VARIOUS LUMBER



HUNDREDS OF WINDOWS



RUVO DOOR MACHINE



TRIM AND MOULDING



VINYL SIDING



ALUMINUM AND FIBERGLASS LADDERS

PREVIEW INSPECTION: Thursday, August 5th from 9AM - 5PM (CDT)

PREVIEW INSPECTION: Thursday, August 5th from 9AM - 5PM (CDT)

DAY 1: Friday, August 6th at 9AM (CDT)

DAY 1:

- 1993 CRAM-A-LOT Down-Acting Cardboard Bailer Model: 60-BD-L.U. S/N: 4365
- Huge Qty. of Slate & Ceramic Floor Tiles, Floor Primers, Adhesives, Grout, Porcelain Tile, Hundreds of Styles
- ARMSTRONG Ceiling Panels
- Huge Inventory of Hardwood & Laminant Flooring, Trim, Thresholds, Premium Carpet, Tack Strips, Carpet Grippers
- Huge Inventory of Power Tools: Construction Saws, Skill Saws, Drills Miter Saws, Table Saws, Shop Vacs TOO MUCH TO LIST!
- MILWAUKEE Panel Saws
- Paint Mixing Equipment
- KVAL 700-C Door Machine
- Conveyor Feed Conveyor
- MERRICK Door Strive Machine Model: 512 S/N: 187
- RUVO Double Miter Saw, RUVO Steel Door Router
- PISTORIUS Double Miter Saws Model: MN-301 S/N: KN605H2
- ROMO Pack Bundle Wrapper Model: COMPACTA S/N: KN605H2
- CHAMPION Horizontal 2-Stage Air Compressor
- RUVO Triad Door Machine
- 1998 HOLZER Genisus Fennoier Model:1435SE S/N: 5222
- WADKIN Moulder
- Huge Qty. of GONDOLA Racking & Shelving
- FAB TECH Accu-Cut Re-roll Table
- Over 50 Various Rolling Ladders
- Massive Inventory of 2x4, 2x6, 2x8, 4x4, 4x6, 4x8 Lumber
- Plywood Sheeting, R Board, Landscape Timbers, I Joist, Truss Joist, Corrugated Siding, Drywall, Sheet Rock, Concrete Block, Railroad Timbers, Rebar
- Large Qty. Poplar, Mahogany, Walnut, Alder, Hickory, Pondarosa Pine, 4¼, 6¼, 8¼



CABLE AND CUTTER



CARTS AND DOLLIES



CONTRACTOR COMPRESSORS



DELTA AND PEERLESS FAUCETS



DEWALT BITS AND BLADES



DOOR HARDWARE



ELECTRICAL INVENTORY



COMPLETE HARDWARE STORE INVENTORY



THRESHOLD HARDWARE



HUNDREDS OF CEILING FANS & LIGHTS



PAINTING SUPPLIES



KITCHEN AND BATH DISPLAYS



PAINTS AND STAINS



KITCHEN CABINETS



NUTS AND BOLTS HARDWARE



TUB AND SHOWER INSERTS



VANITIES



YARD MAINTENANCE EQUIPMENT

DAY 2: Saturday, August 7th at 9AM (CDT)

PLAN NOW TO ATTEND THE LARGEST BUILDING SUPPLY AUCTION OF THE YEAR!

DAY 2:

- Complete Furniture Showroom Inventory
- NEW Brand Name Appliances
- Home Furnishings Retail Store Inventory
- Hundreds of Ceiling Fans & Hanging Lights
- Over 40 Vanities, Sinks, Kitchen Sinks, DELTA & PEERLESS Faucets, Counter Tops, Shower Faucets & Trims, Toilet Seats
- Over 20 New FRIGIDARE Window Air Conditioners
- Huge Inventory of New SAMSUNG, WHIRPOOL, FRIGIDAIRE, ELECTROLUX, KITCHEN AID Appliances
- Fire Place Inserts & Duct
- PVC & Copper Piping
- Huge Qty. of Mattresses, Box Springs, Headboard, End Tables, Chairs, Couches
- FAR TOO MUCH TO LIST!



COOKTOP INSERTS



HUNDREDS OF HANGING LIGHT FIXTURES



RECLINERS, SOFAS & CHAIRS



FRONT LOAD WASHER AND DRYERS



HOME DECOR AND FURNISHINGS INVENTORY



NEW FURNITURE WRAPPED AND READY FOR SHIPPING



DESKS AND OFFICE FURNITURE



BEDROOM INVENTORY

UPCOMING AUCTIONS

- The Federal Group
Location: Knox, Indiana
Featured Equipment: Door Slabs, Woodworking Equipment, Vinyl Siding Presses & Machines
www.CharlestonAuctions.com
- General Electric Company
Multiple Plant Closings
Locations: IN, KY, VA, AL, IL, PR
www.CharlestonAuctions.com

CA CHARLESTON Auctions & Liquidations

www.CharlestonAuctions.com • (877) 357-8124 • (260) 373-0850

PREVIEW INSPECTION: Thursday, August 5th from 9AM - 5PM (CDT)